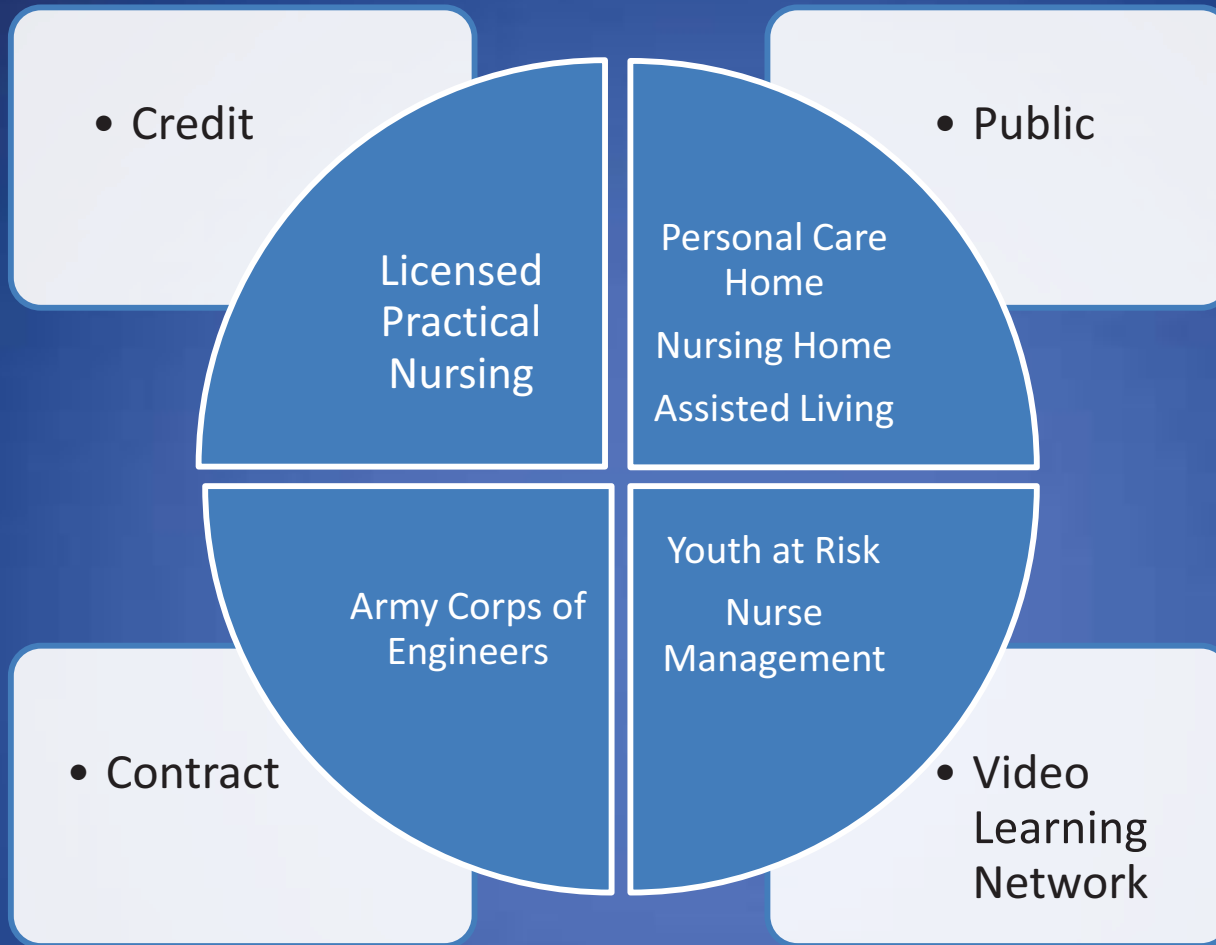




Continuing Education and the Adult Learner

Successful Program offerings at Penn
State Greater Allegheny



Getting the Word Out



2010 PA Statewide High Priority Occupations

Occupation	Wage	Job Openings	Unemployment Rate 2007-2009
Licensed Practical Nurse	\$40,154	1, 450	1.8%
Home Health Aides	\$22,087	2,277	5.1%
Nursing Aides	\$25, 043	1,833	5.1%
Registered Nurse	\$61,626	4, 803	1.1%

<http://www.portal.state.pa.us/portal/server.pt?open=514&objID=575365&mode=2>

Projected Outlook for Employment Allegheny County

Job Title	Annual Average Wages	Projected Increase (next 6 years)	Annual Openings
Licensed Practical Nurses	\$39,500	14.10%	147
Home Health Aides	\$21,520	40.10%	242
Nurse Aides	\$25,280	14.90%	230
Registered Nurses	\$59,580	19.10%	785

Source: 2010 High Priority Occupations for the Three Rivers Workforce Investment Areas

Licensed Practical Nursing Program



Credit Programming

- Licensed Practical Nursing (LPN) Program
 - Established 2005
- Collaboration-Strategic Partnership
 - UPMC St. Margaret School of Nursing
 - UPMC McKeesport Hospital
 - Penn State Greater Allegheny Continuing Education



Contract Credit Tuition and Adjustment Request

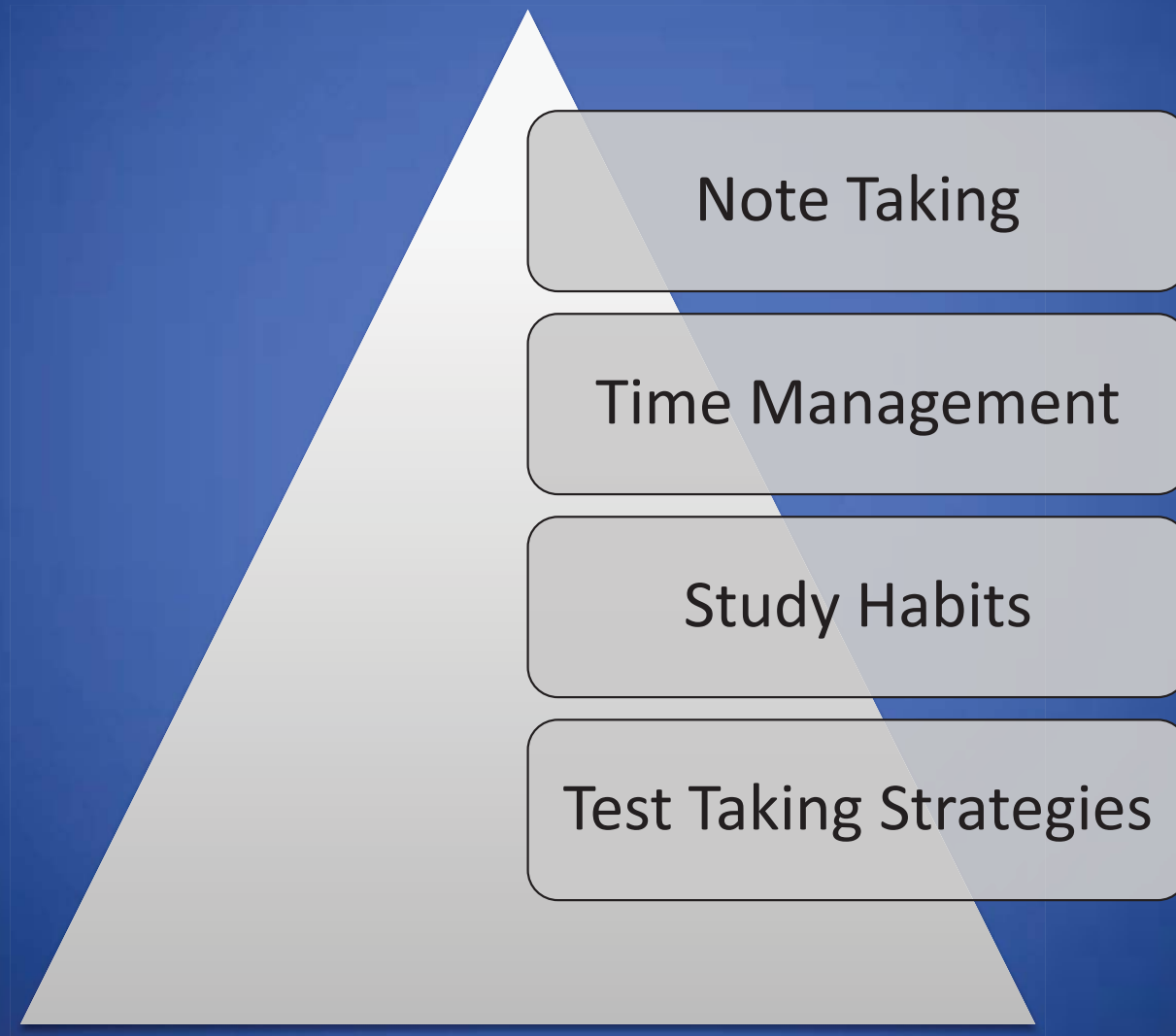
- Documentation of need
- Background
- Financial analysis
- Time frame requested
- Tuition requested
- Approvals required
 - Director of Continuing Education
 - Campus Chancellor
 - Vice President Commonwealth Campuses

One-stop services

- Fosters a supportive climate for adults
- Orientation session
 - Register students
 - Undergraduate Non-degree
 - Campus tour
 - Penn State ID and e-mail
 - Provide information on College Level Entrance Proficiency (CLEP) tests

One-stop services

Optional Study Skills Session



Credit Courses

- English 015
 - Psychology 100
 - Nutrition 251
 - Biology 129
 - Biology 141
 - Biology 142
 - Human Development and Family Studies 129
- 3 credits
 - 3 credits
 - 3 credits
 - 4 credits
 - 3 credits
 - 1 credit
 - 3 credits
 - 20 Penn State Credits

Class of 2010



- 90% of the Class was offered employment at UPMC facility
- The graduates of the class of 2010 who took the NCLEX-PN licensure exam as of January 6, 2011 had a pass rate of 96%
- All graduates (100%) of the class of 2010 expressed satisfaction with the nursing program

Remaining in the Mon Valley

- 82 Graduates from 2005-2010
- 13 continued on with education beyond LPN
- 10 enrolled in the RN program at UPMC McKeesport
- 33 remained in the Mon Valley
 - UPMC McKeesport
 - Kane Regional
 - Other long-term care facilities

Professional Progression

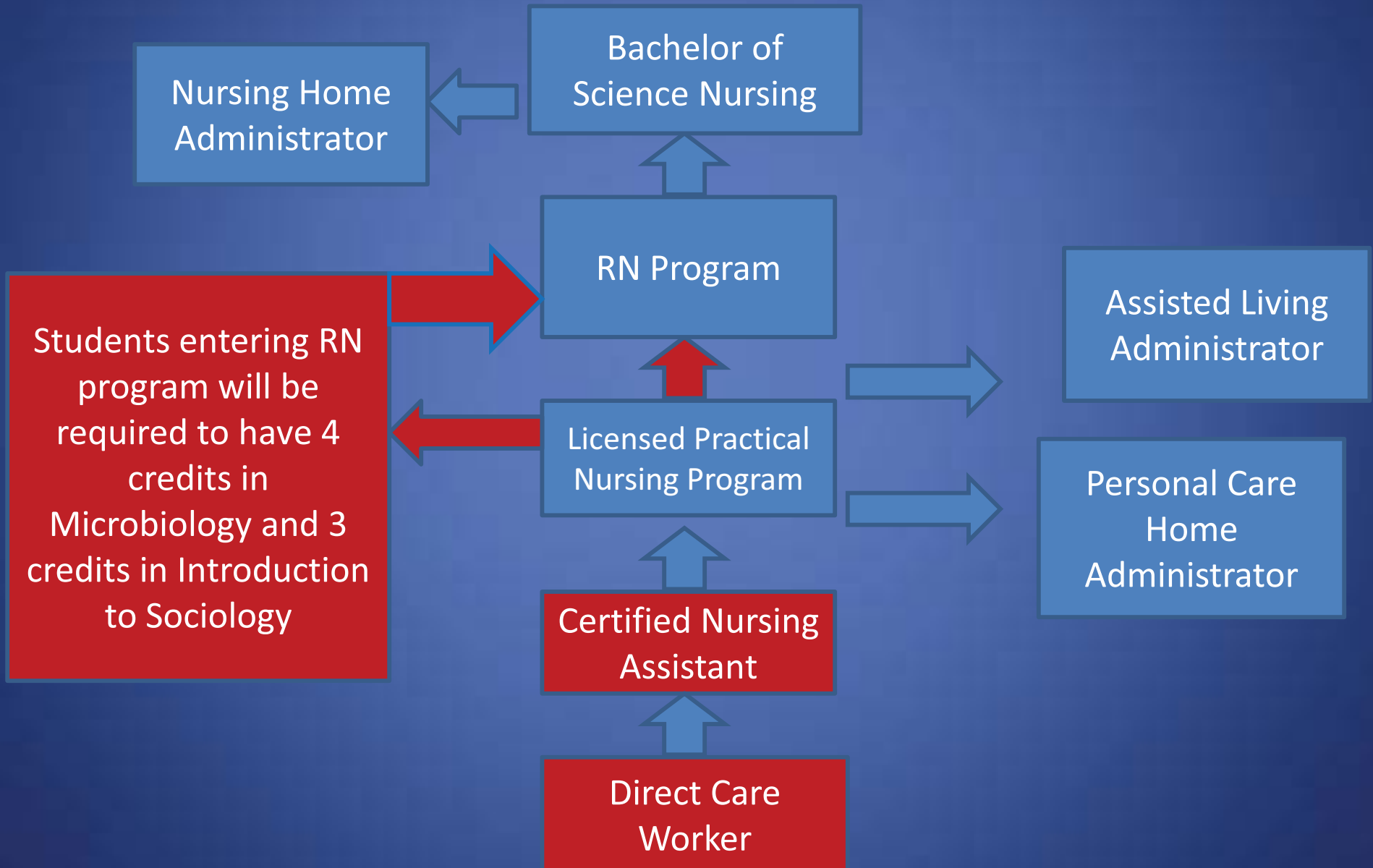
LPN to RN

- Students graduating from the LPN program have all the requirements to enter into an Registered Nurse program with the exception of:
 - Introduction to Sociology
 - Microbiology (with Lab)

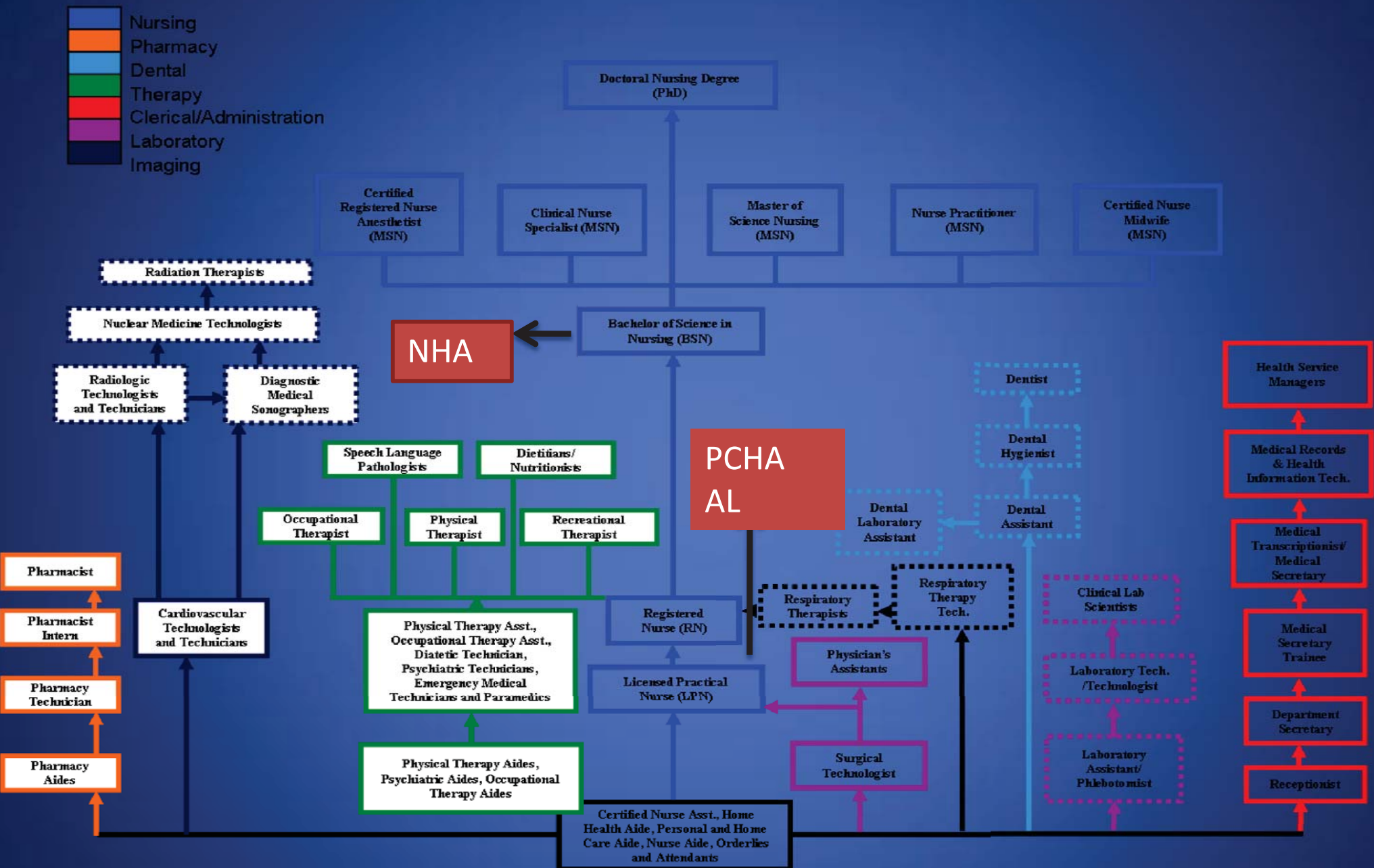
Moving Up the Career Ladder

- All courses taken in the LPN and RN program can be transferred into a Bachelor of Science Nursing Degree.
- At Penn State, upon completion of RN licensure students would need the following to obtain a Bachelor of Science in Nursing
 - 33 credits in General Education
 - 18 credits in Non-Clinical Nursing
 - 10 credits in Clinical Nursing

Ladder shows existing Partnerships in Blue and Proposed Partnerships in Red



It's possible to start anywhere with proper training and education.



© Arik, Murat, David A. Penn, and Susan K. Harmon. 2006. *A Study of Healthcare Occupations in Northwest Tennessee: Workforce Needs, Career Ladder, Awareness Programs, and Financial Sources for Training*. Business and Economic Research Center, Middle Tennessee State University, Murfreesboro, TN. Reprinted with permission. To view the complete study, visit <http://www.mtsu.edu:80/~berc/pdfs/dyersburg22.pdf>

Greater Allegheny Continuing Education Quiz

- What country is Penn State Greater Allegheny working with to provide “train the trainer” courses?

Vietnam



Meeting the needs of the current population of PA

- Third in the Nation in percentage of population age 65 or older
- Fourth in the number of residents age 85 or older
- By 2020, more than 25% of our population will be over the age of 65
 - 50% increase in approximately 10 years

– Pennsylvania Health Care Association (PHCA)

Personal Care Home	Assisted Living	Nursing Home
Lowest level of care needed	Mid-level of care needed	Highest level of care needed
Supplemental health care services cannot be provided by PCH, but PCH can assist with securing healthcare	Supplemental health care services are mandatory, allowing individuals to age in place	Provide 24 hour nursing care or direct medical services
Not required to hire licensed, certified or registered medical professionals	Must have a licensed nurse available in the building or on call at all times	Must have licensed medical professionals employed

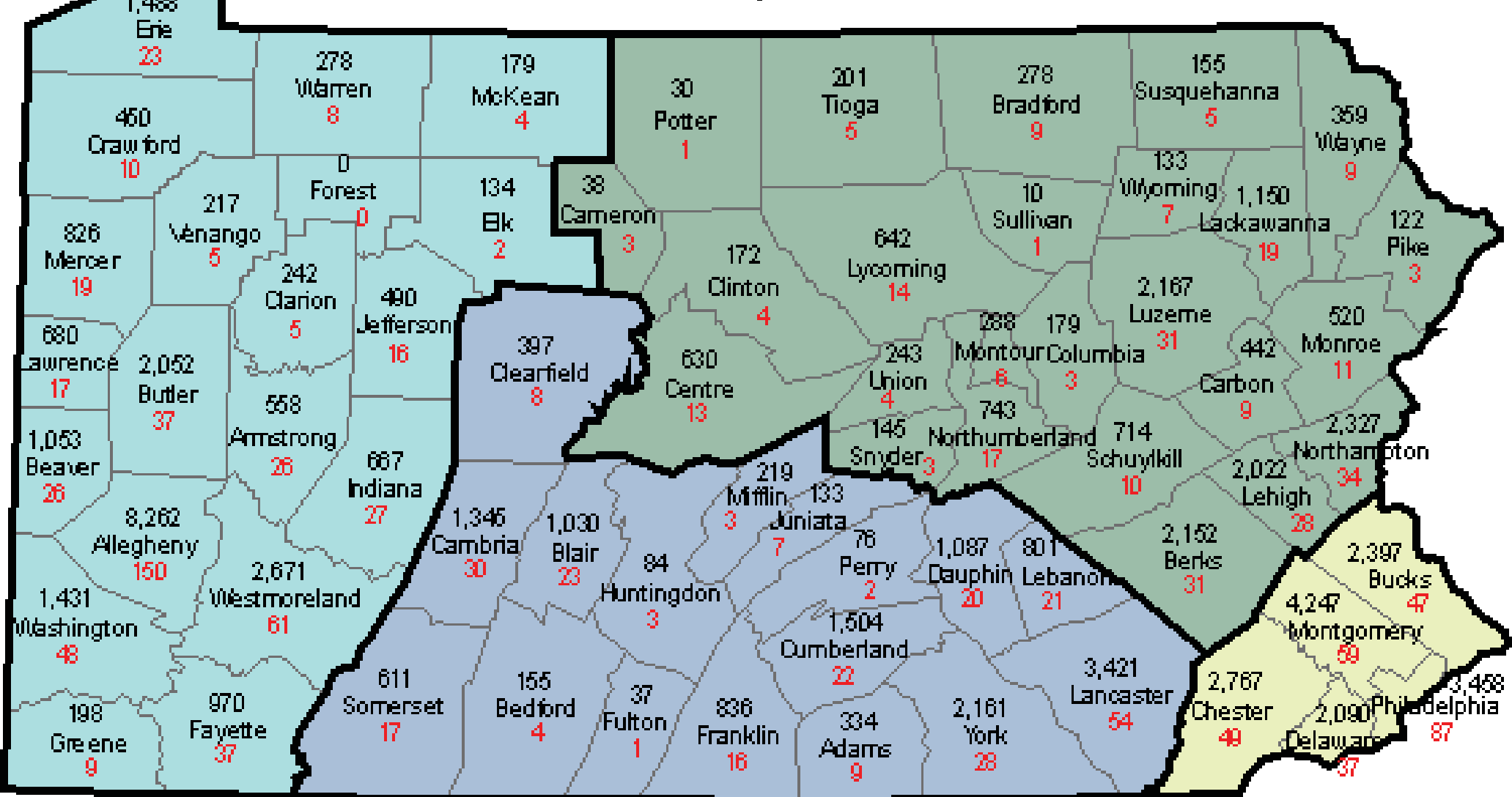
Personal Care Home Administrator and Annual Continuing Education Training

- 1,600 licensed personal care homes in PA
- Approximately 51,000 residents



Personal Care Homes & Licensed Capacity Totals by County

As of February 28, 2011



Legend

- Central
- Northeast
- Southeast
- West

Top numbers equal total licensed capacity

Lower numbers equal number of licensed homes

- All material is approved by the DPW
 - Course hours cannot be changed
 - Module hours vary depending upon content
- Feedback from participants is critical
- Addition of Social work credits and PA Nursing contact hours has resulted in program growth
- Students register via the Penn State SOAR system or check

- Over 118 Individuals have taken the 100 hour administrator training course to date
- 98% pass rate on State exam
 - ESL main obstacle
- Over 20 additional newly created CEU modules are now available for course offering
- CEU programming successfully delivered off-site
- WIA funding through CareerLink
- Scholarships available through DPW

Summer 2011

- 4 continuing education courses (approved for PCH,NHA,SW and Nursing Contact hours) are scheduled to be delivered via technology to 4 remote Penn State CE locations.
- July and August 2011



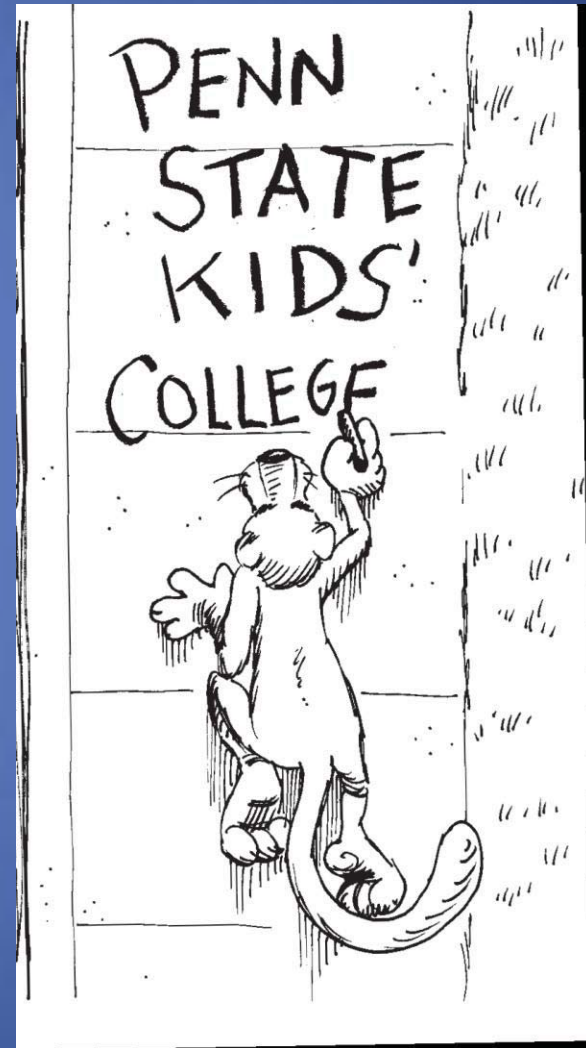
University Professional &
Continuing Education Association

- This program received the University Professional Continuing Education Association (UPCEA) Community of Practice (CaPP) Exemplary Program Award for 2011.



The Daily Show with Jon Stewart contacted PSGA regarding this Kids' College program..

- A. Crime Scene Investigation Camp
- B. Cooking Camp
- C. Rocket Building Camp
- D. Magic of Material Science Camp
- E. Drumming Camp



Nursing Home Administrator Program

Commonwealth of Pennsylvania

- 730 nursing home facilities
- 89,471 beds
- Pennsylvania Department of Health
- State Board of Nursing Home Administrators
- 120-hour core of knowledge
- 16 Modules
 - All courses are 7.5 hours



Assisted Living

Assisted Living (AL) Training Program

- Department of Public Welfare
 - Office of Long-Term Living
 - Regulations effective January 18, 2011
- PSGA was the first (and currently only) approved institution in PA to offer the new 15-hour training program
 - Approved March 23, 2011
- Augments the 100-hr PCH program

Modules in 15-hr Program

- Neurological impairment
- Infection control
- Aging in place
- Person centered care
- Informed consent



First Offering of New AL Course Content

June 1 & 2, 2011 PSGA



Overview of Training Program

United States Army Corps of Engineers

Pittsburgh District

Operations Division



US Army Corps of Engineers
BUILDING STRONG®



Inception



- December 2007
- 338 Employees trained to date
- On-Site at Corps of Engineers (COE) facilities
- Program expanded to West Virginia
- Students registered through the Penn State SOAR system to meet client needs

Courses-Maintenance Personnel



- Power Transmission and Pumps
- Basic PLCs
- Advanced PLCs
- Troubleshooting
- Pneumatics and Hydraulics
- Arc Flash
- Motor Control and AC Current
- Print Reading and Basic Electricity

Troubleshooting Techniques Course

- Skills to troubleshoot specific facilities
- Limited class size
- Fault scenarios developed to be site specific
- 2 week course
- 5 sites



Management Training

- Situational Leadership
- Relevant to issues present in the COE
 - Moving up through the ranks
 - How to deal with your buddy when you become the boss



??? QUIZ TIME ???

- What member of the VLN Team was a previous director of Penn State Continuing Education, McKeesport?



Ed Donovan

Video Learning Network (VLN)

- Mock demonstration of PCH module was presented to DPW in Harrisburg
 - York campus and Greater Allegheny
- Only Penn State campus to receive approval to offer Personal Care, Nursing Home and Assisted Living via Video-conference technology.
- PCHA credit offering planned
 - Spring 2012
 - 7 credits

Video Learning Network

- Instructional Designer
 - Part time
 - Training Instructors
- Hot Lava incorporation
 - http://www.outstart.com/hot_lava_mobile_video.htm

Fall 2011

- Youth at risk
- Nurse
Management



HDTV

- H-Hard work
- D- Dedicated to excellent customer service
- T- Teamwork
- V-Value relationships

- Questions???
- JeanMarie Jacob
 - juj117@psu.edu