

Creation of New Academic Programs at the Commonwealth Campuses

**Hendricks Conference
May 12, 2015**

Dr. David Christiansen

**Associate VP for the Commonwealth Campuses and Senior Associate Dean for Academic
Programs**

djc21@psu.edu

Three goals

- 1) Describe the process by which potential academic programs are identified.
- 2) Describe the process by which programs are approved for delivery on the campuses.
- 3) Assess the appeal of select programs to adult learners at UP and the campuses.

Commonwealth Campus Aggregate Memo (8/24/11)

“[N]ew programs should be strategically selected, based on high prospective demand and high student interest, and, to the extent possible, be career-oriented.”

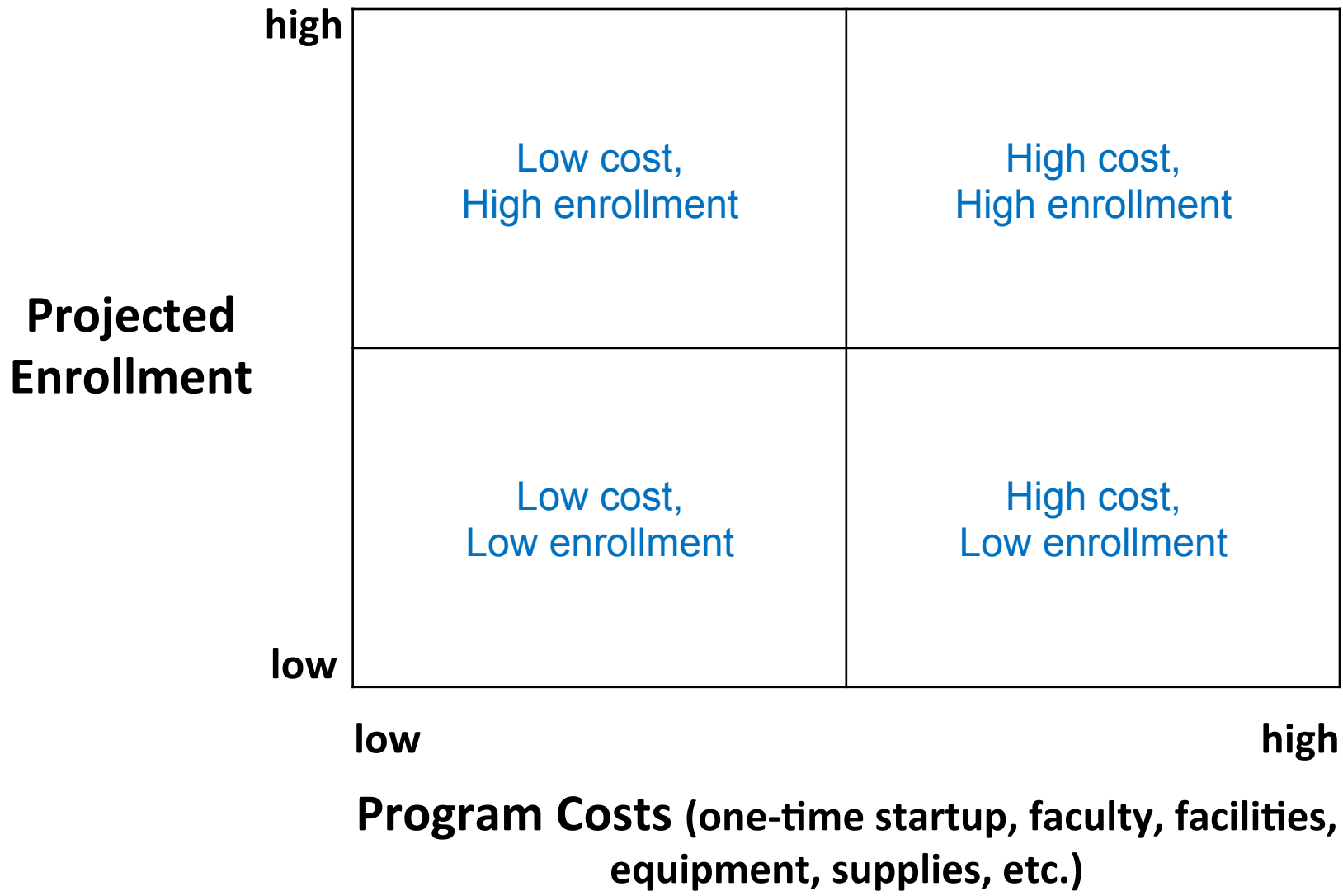
www.psu.edu/provost/CoreCouncilReco/Commonwealth%20Campuses.pdf

- **High prospective demand** = appealing to high school students and families
- **High student interest** = as demonstrated by enrollment numbers of current students
- **Career-oriented** = realistic pathway to jobs in demand

Top 10 Occupations in the Southwestern Region that Require a Bachelor's Degree

Occupation Title	Employment Current (2012)	Employment Projected (2022)	Total Growth	Annual Growth Openings	Annual Replacement Openings	Annual Total Openings
Accountants & Auditors	11,820	12,770	950	96	254	350
Elementary School Teachers	9,450	9,580	130	12	207	219
Middle School Teachers	6,760	6,860	100	11	149	160
Human Resources, Labor Relations, & Training Specialists	4,530	5,190	660	65	77	142
Computer Systems Analysts	4,420	4,630	210	22	83	105
Civil Engineers	3,570	4,050	480	46	72	118
Management Analysts	3,830	3,950	120	13	61	74
Industrial Engineers	3,450	3,920	470	47	76	123
Network & Computer Systems Administrators	3,440	3,910	470	44	58	102
Market Research Analysts & Marketing Specialists	3,080	3,870	790	80	82	162

Student Interest	high	<p>Criminal Justice</p> <p>Journalism</p> <p>Psychology</p>	<p>Mechanical Engineering</p> <p>Accounting</p> <p>Nursing</p>
	low	<p>Philosophy</p> <p>Classics</p> <p>Theatre</p>	<p>Software Engineering</p> <p>Computer Science</p> <p>Rehabilitation and Human Services</p>
		low	high
	Market Demand for Jobs Requiring a Baccalaureate Degree		



Commonwealth Campus Aggregate Memo (8/24/11)

“The Core Council recommends that the consolidation and shared resources approach to administrative infrastructures at the Commonwealth Campuses be extended to faculty sharing arrangements where feasible and appropriate . . . Faculty may be appointed on the budgets of more than one campus and physically teach at more than one campus where logistics and distance are not prohibitive . . . [S]tudents on multiple campuses may be able to utilize a course offered from another campus using video or other technology.”

www.psu.edu/provost/CoreCouncilReco/Commonwealth%20Campuses.pdf

“The Vice President for Commonwealth Campuses will be charged to develop, where appropriate, regional clusters of activity and resource-sharing among Penn State Campuses. These arrangements are not restricted to actions within a single academic college, but may cross college structures of the campuses in order to facilitate programmatic collaboration, cost savings, and more effective utilization of resources.”

Penn State's Campuses and Organizational Structures: Building on the Past, Preparing for the Future, Penn State News -- 3/22/05 (

<http://live.psu.edu/story/11049>)

Examples of Shared Programs

2010

- Administration of Justice (Beaver, New Kensington, Shenango)
Total enrollment of 96 students in Fall 2014

2014

- Administration of Justice (DuBois, Fayette, Greater Allegheny)
- Administration of Justice (Hazleton, Wilkes-Barre)
- Accounting option of Business (Hazleton, Schuylkill, Wilkes-Barre)
- Biology (Harrisburg, York)
- Corporate Communication (Hazleton, Lehigh Valley, Schuylkill, Wilkes-Barre)
- Rehabilitation and Human Services (Hazleton, Wilkes-Barre)

2015 (anticipated)

- Biobehavioral Health (Greater Allegheny, New Kensington)
- Health Policy and Administration (Harrisburg, Mont Alto)
- Project and Supply Chain Management (Beaver, Fayette, Greater Allegheny, New Kensington, Shenango)

Academic Administrative Policies and Procedures Manual

<http://www.psu.edu/oue/aappm/>

P: Curricular Principles and Procedures

<http://www.psu.edu/oue/aappm/P-0-curricular-principles-and-procedures.html>

P1: New Undergraduate Degrees/Majors, Options, IUGs, and Minors; Name Changes

<http://www.psu.edu/oue/aappm/P-1-new-undergraduate-degrees-majors-options-iugs-minors.html>

P2: Changes in Undergraduate Programs/Major, Options, IUGS, and Minors

<http://www.psu.edu/oue/aappm/P-2-changes-in-undergraduate-programs-majors-options-iugs-minors.html>

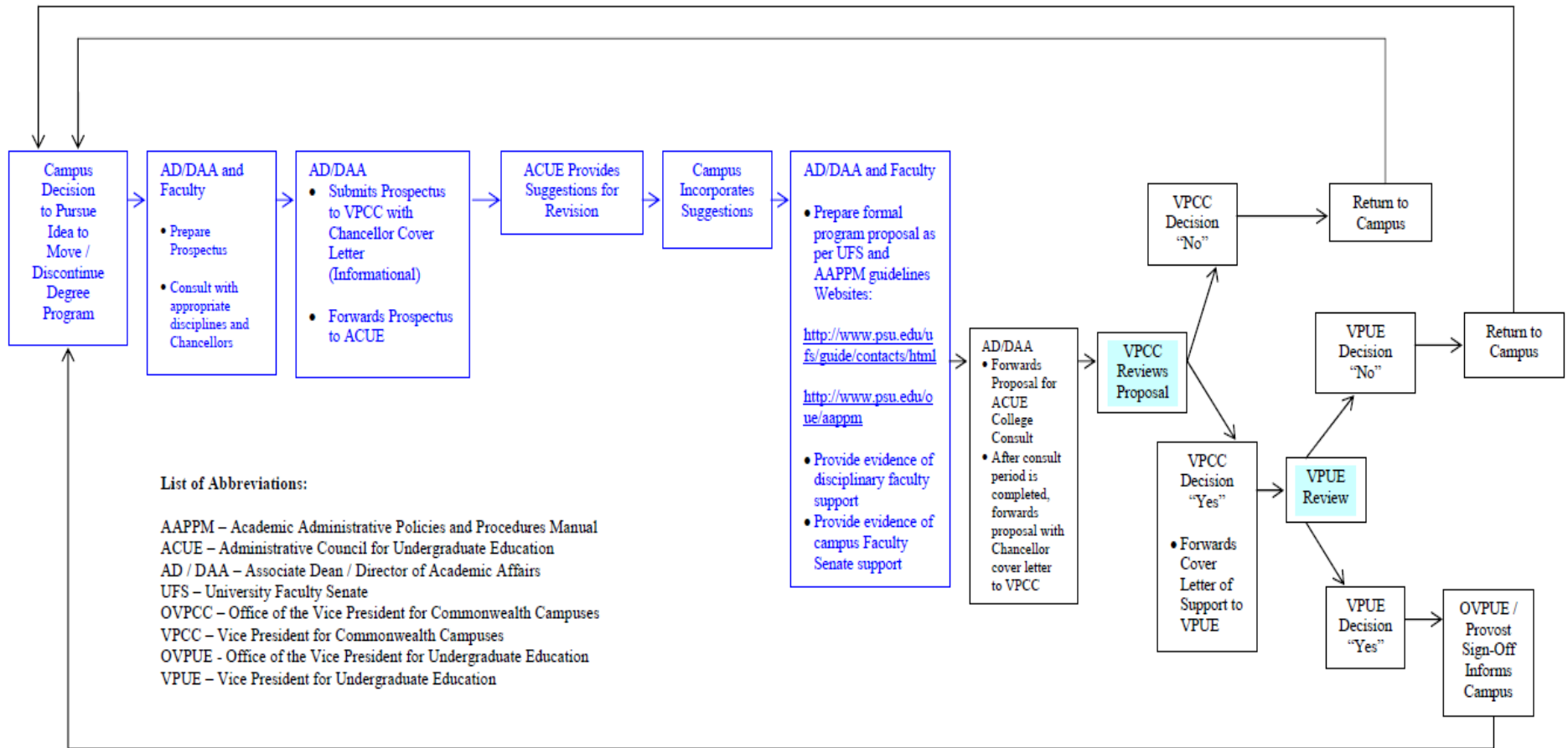
P3: Moving/Sharing/Discontinuing Degree Programs among Colleges and Campuses

<http://www.psu.edu/oue/aappm/P-3-moving-sharing-discontinuing-degree-programs-among-colleges-campuses.html>

P4: Academic Program or Minor Closure

<http://www.psu.edu/oue/aappm/P-4-academic-program-minor-closure.html>

Commonwealth Campuses
P-3 Academic Program Approval Path – Moving/Discontinuing Degree Programs
Effective Summer 2006



PROSPECTUS PROCESS

PROPOSAL PROCESS

Learning Quality Indicators for P1, P2, and P3 Proposals

- On-going availability of a minimum of three or more standing faculty;
- Program leadership by senior-level faculty;
- Availability of a standing faculty cohort academically and disciplinarily aligned with the proposed program;
- Ability to move student program cohorts through in a timely manner;
- Impact on the University's preference to utilize, whenever possible, standing or tenure track senior level faculty in lower division undergraduate courses;
- Availability of faculty to deliver currently authorized, as well as new programs;
- Availability of a sufficient number of program electives within the discipline and in supporting area of study;
- University-wide curricular integrity that includes disciplinary community engagement and the avoidance of curricular drift;
- Ability to minimize the need for core course substitutions and explicit rationale for, and justification of, necessary core substitutions.

<http://www.psu.edu/oue/aappm/P-1-new-undergraduate-degrees-majors-options-iugs-minors.html>

II. Market Analysis

Campus Instructions: insert one or two paragraphs that contextualize the data presented below, including an overview of the career paths of students who will graduate in the proposed program, a summary of the national and state employment outlook, and a statement regarding the regional competition. Local market information may be added if relevant. For programs leading to graduate study, include the graduate fields of study students may be eligible to pursue.

a. Job Market for Graduates

National Employment Outlook (OVPCC will complete)

State Employment Outlook (OVPCC will complete)

b. Competition within the Region

Regional Colleges and the Number of Degrees Awarded (OVPCC will complete)

IV. Faculty Resources

Campus Instructions: In a narrative statement, address the following:

- (1) ability of your current faculty to contribute to the program,
- (2) identify the senior faculty member(s) who will assume leadership for the program,
- (3) how you will address gaps in coverage for the proposed program, and
- (4) your plans to hire additional full-time faculty members to meet the University minimum of three core faculty members to offer the program.

Maximum length without tables: one page.

Existing Full-Time Faculty Members

Name	Appointment Type	Discipline and Specialization Area
<i>example: Milman Parry</i>	<i>TT</i>	<i>Classics; Greek epic poetry</i>

Full-Time Faculty Hiring Plan

Appointment Type	Discipline and Specialization Area	Start Date

VII. Facilities and Technology Resources

Campus Instructions: Explain how the campus's physical infrastructure will support the program. If there are any gaps in coverage, identify them and include a plan on how you will address them in a timely fashion. Be specific to the program. Maximum length: two pages.

- a. **Classroom and Laboratory Facilities**
- b. **Library Resources**
- c. **Computing Resources**

VIII. Academic Support for Students

Campus Instructions: Explain how the campus's personnel will support the program. Be specific to the program. Maximum length: four pages.

- a. **Academic Advising**
- b. **Learning Support**
- c. **Internships (if relevant)**
- d. **Career Advising**

Status of 2013-14 New Programs						
Program	Campus	P1 College	Prospectus	ACUE Review	Submitted	Status
Accounting	Berks	Harrisburg	Nov 2013	Dec 2013	Mar 2014	Approved 5/14
Administration of Justice	DuBois, Fayette, Greater Allegheny	UC	Oct 2012	Oct 2013	Nov 2013	Approved 3/14
Arts Administration	Lehigh Valley	Behrend	Nov 2013	May 2014	May 2014	Approved 6/14
Biochemistry & Molecular Biology	Berks	SCI	May 2013	Jan 2014	Jan 2014	Approved 2/14
BSB - Accounting option	Beaver	UC	Sep 2013	Dec 2013	Dec 2013	Approved 2/14
BSB - Accounting option	Brandywine	UC	Nov 2013	Mar 2014	Apr 2014	Approved 5/14
BSB - Accounting option	Fayette	UC	Oct 2013	Feb 2014	Feb 2014	Approved 5/14
BSB - Accounting option	Hazleton, Schuylkill, Wilkes-Barre	UC	Mar 2013	Dec 2013	Apr 2014	Approved 5/14
Corporate Communication	Hazleton, Schuylkill, Wilkes-Barre, Worthington Scranton	Abington	Mar 2013	Apr 2014	May 2014	Approved 6/14
Criminal Justice	Abington	Altoona	Feb 2013	Nov 2013	Feb 2014	Approved 2/14
Criminal Justice	Berks	Altoona	Jul 2013	Jan 2014	Feb 2014	Approved 3/14
Criminal Justice (minor)	Harrisburg (via World	Harrisburg	Dec 2013	Mar 2014	May 2014	Approved 6/14
Environmental Science	Erie	Behrend	Oct 2012	Oct 2013	Feb 2014	Approved 6/14
Finance	Erie (on World Campus)	Behrend	Nov 2013	Jan 2014	Feb 2014	Approved 2/14
Game Development (minor)	Erie	Behrend	Dec 2012	Dec 2013	Feb 2014	Approved 4/14
Hospitality Management (P3)	Berks	HHD	Sep 2013	Apr 2014	May 2014	Approved 7/14
Project & Supply Chain Mang.	Harrisburg	Behrend	Nov 2013	Mar 2014	May 2014	Approved 6/14
Psychology	Fayette	UC	Oct 2013	Feb 2014	Mar 2014	Approved 4/14
Rehabilitation & Human Services	Abington	ED	Jul 2013	Apr 2014	Jun 2014	Approved 7/14
Rehabilitation & Human Services	Hazleton, Wilkes-Barre	ED	Feb 2013	Jun 2014	Jun 2014	Approved 7/14
Science - Mathematical option	Abington	SCI	Feb 2013	Nov 2013	Mar 2014	Approved 3/14

Status of 2014-15 New Programs						
Approved						
Campus	Program	P1 College	Prospectus	ACUE Review	Submitted	Proposal Status
Abington	Accounting	Harrisburg	Jan 2014	Dec 2014	Feb 2015	Approved 3/15
Altoona (via WC)	Entrepreneurship (minor)	Altoona	Feb 2014	Feb 2015	Mar 2015	Approved 4/15
Berks	Hospitality Management (P1)	HHD	Jan 2014	Jul 2014	Sep 2014	Approved 1/15
Berks	Rehabilitation & Human Services	ED	Apr 2014	Oct 2014	Dec 2014	Approved 2/15
Erie	Psychology - Hum. Factors option	Behrend	Sep 2012	Aug 2014	Sep 2014	Approved 1/15
Erie (via WC)	Marketing (minor)	Behrend	Oct 2014	Nov 2014	Nov 2014	Approved 12/14
Harrisburg	Psychology/Applied Psych. IUG	Harrisburg	Nov 2013	Mar 2014	Mar 2014	Approved 3/15
Harrisburg	Sociology - General Science and Community Org. options	Harrisburg	Mar 2014	Jul 2014	Nov 2014	Approved 1/15
Harrisburg (via WC)	Accounting	Harrisburg	Feb 2014	Jan 2015	Mar 2015	Approved 4/15
Harrisburg, York	Biology	SCI	Jan 2014	Jul 2014	Aug 2014	Approved 9/14
Hazleton, Wilkes-Barre	Administration of Justice	UC	Jan 2013	Jul 2014	Aug 2014	Approved 9/14
Lehigh Valley	Health Policy & Administration	HHD	Mar 2014	Nov 2014	Nov 2014	Approved 12/14
Schuylkill	Biology	SCI	Oct 2014	Oct 2014	Nov 2014	Approved 12/14
Worthington Scranton	Psychology	UC	Sep 2014	Jan 2015	Feb 2015	Approved 3/15
York	BSB - Accounting option	UC	Apr 2014	Aug 2014	Aug 2014	Approved 9/14
York	Psychology	UC	Sep 2014	Mar 2015	Mar 2015	Approved 4/15
Submitted						
Campus	Program	P1 College	Prospectus	ACUE Review	Submitted	Proposal Status
Erie	Digital Arts & Media	Behrend	Oct 2013	Nov 2014	Feb 2015	At Faculty Senate
Harrisburg	Civil Eng./Environmentl Eng. IUG	Harrisburg	Nov 2014	Jan 2015	Feb 2015	At Grad School
Harrisburg	Electical Engineering IUG	Harrisburg	Apr 2014	Jun 2014	Jun 2014	At Grad School
Harrisburg	Humanities	Harrisburg	Apr 2014	Aug 2014	Oct 2014	At Faculty Senate
Harrisburg	Mechatronics (minor)	Harrisburg	Oct 2014	Dec 2014	Feb 2015	At Faculty Senate
Harrisburg	Mechatronics Technology (minor)	Harrisburg	Oct 2014	Dec 2014	Feb 2015	At Faculty Senate

Status of 2014-15 New Programs						
ACUE Review Completed						
Campus	Program	P1 College	Prospectus	ACUE Review	Submitted	Proposal Status
Altoona	Global Language and Culture (minor)	Altoona	Feb 2014	Feb 2015		
Harrisburg, Mont Alto	Health Policy & Administration	HHD	Mar 2014	Apr 2015		Under development
Prospectus Submitted						
Campus	Program	P1 College	Prospectus	ACUE Review	Submitted	Proposal Status
Abington	IST - Design option	IST	Apr 2013			
Abington	RPTM - Commercial and Community option	HHD	Mar 2015			Under development
Altoona	Biology - Health Science option	SCI	Jan 2014			
Altoona	Kinesiology	HHD	Oct 2014			Under development
Beaver, Fayette, Greater Allegheny, New Kensington, Shenango	Project & Supply Chain Management	Behrend	Feb 2015			Under development
DuBois (via WC)	2IST - Networking option	HHD	Dec 2014			Under development
Erie	Crime, Psychology, and the Political Process (minor)	Behrend	Jul 2014			
Erie	Chemistry - MBA IUG	Behrend	Jun 2014			
Erie	Mathematics - MBA IUG	Behrend	Jun 2014			
Erie	MIS - Data Analyst option	Behrend	Mar 2015			
Erie	Kinesiology	HHD	Nov 2013			Under development
Fayette	Corporate Communication	Abington	Feb 2015			
Greater Allegheny, New	Biobehavioral Health	HHD	Nov 2014			Under development
Harrisburg (via WC)	Marketing	Harrisburg	Feb 2014			
Lehigh Valley	Project & Supply Chain Mang.	Behrend	Jan 2014			Under development
New Kensington	Structural Design and Construction Engineering Technology	Harrisburg	Nov 2013			Feasibility being re-evaluated
University College (via WC)	Business - Entrepreneurship option	UC	Apr 2015			Under development
University College (via WC)	Business (minor)	UC	May 2015			

Status of 2015-16 New Programs						
Campus	Program	P1 College	Prospectus	ACUE Review	Submitted	Proposal Status
AA, BR, DS, BD, FE, GA, NK	Energy Engineering 3+1	EMS	Aug 2013			
Abington	Arts Administration	Behrend				
Abington	Nursing (2nd degree)	NURS				
Abington	Biology - General Biology option	SCI				
Abington	Finance	Harrisburg				
Abington	Security and Risk Analysis	IST				
Altoona	Accounting	Behrend				
Beaver	Biology	SCI				
Berks	Agribusiness Management	AG SC				
Berks	Structural Design and Construction	Harrisburg				
Berks	Industrial Engineering	ENGR				
DuBois	Radiological Sciences	UC				
Erie	Rehabilitation & Human Services	ED				
Fayette	Recreation, Park, & Tourism Mang.	HHD				
Harrisburg	Kinesiology	HHD				
Lehigh Valley	Biobehavioral Health	HHD				
Mont Alto	Radiological Sciences	UC				
Mont Alto	Psychology	UC				
York	Criminal Justice	Harrisburg				
York	Kinesiology	HHD				


Majors Examined

Program	University Park	Altoona	Abington	Harrisburg	Erie	Berks	University College
Accounting	ACCTG			ACCT	ACNTG		
Biology	BIOL	BIOAL	BIOAB		BIOBD	BIOBL	
English	ENGL	ENGAL	ENGAB	ENGCL	ELISH		ENGCC
Human Development and Family Studies	HD FS	HFSAL		HFSCCL			HFSCC
Kinesiology	KINES					KINBL	
Mechanical Engineering	M E			ME CA	ME BD	ME BL	
Psychology BA	PSYBA	PSCBA			PSHBA		PYACC
Psychology BS	PSYBS	PSCBS		PSYC	PSHBS		PYSCC

Degrees Awarded in Identical or Similar Programs

	Academic Year										Total
	200304AY	200405AY	200506AY	200607AY	200708AY	200809AY	200910AY	201011AY	201112AY	201213AY	
Accounting											
University Park	192	261	295	305	266	296	286	284	292	362	2839
Commonwealth Campus	53	84	63	79	75	85	108	99	101	111	858
Total	245	345	358	384	341	381	394	383	393	473	3697
Biology											
University Park	196	192	214	188	169	191	242	221	262	247	2122
Commonwealth Campus	33	40	31	40	47	60	72	83	92	94	592
Total	229	232	245	228	216	251	314	304	354	341	2714
English											
University Park	187	207	177	199	154	165	175	143	149	113	1669
Commonwealth Campus	67	86	82	75	78	86	85	110	85	103	857
Total	254	293	259	274	232	251	260	253	234	216	2526
Human Development and Family Studies											
University Park	188	177	190	189	152	123	188	169	172	132	1680
Commonwealth Campus	141	147	140	135	155	159	178	186	176	175	1592
Total	329	324	330	324	307	282	366	355	348	307	3272
Kinesiology											
University Park	213	192	206	234	212	260	283	311	317	315	2543
Commonwealth Campus	7	4	11	18	13	15	15	29	16	31	159
Total	220	196	217	252	225	275	298	340	333	346	2702
Mechanical Engineering											
University Park	232	279	258	266	238	228	247	253	263	310	2574
Commonwealth Campus	29	34	34	59	46	47	54	55	72	90	520
Total	261	313	292	325	284	275	301	308	335	400	3094
Psychology BA											
University Park	241	216	236	233	189	153	240	236	241	261	2246
Commonwealth Campus	18	25	28	29	28	31	34	52	65	94	404
Total	259	241	264	262	217	184	274	288	306	355	2650
Psychology BS											
University Park	230	225	232	258	230	209	224	226	270	285	2389
Commonwealth Campus	68	98	99	107	109	78	78	99	124	149	1009
Total	298	323	331	365	339	287	302	325	394	434	3398

Bold: First Year a Commonwealth
Campuses Program Awarded a Degree

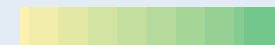
Low #  High #

Degrees Awarded to Adult Learners in Identical or Similar Programs

	Academic Year										Total
	200304AY	200405AY	200506AY	200607AY	200708AY	200809AY	200910AY	201011AY	201112AY	201213AY	
Accounting											
University Park	14	10	14	10	21	34	23	10	22	25	183
Commonwealth Campus	7	30	25	5	34	37	44	35	49	38	304
Total	21	0	39	15	55	71	67	45	71	63	487
Biology											
University Park	25	22	28	19	33	31	37	25	23	25	268
Commonwealth Campus	1	7	7	4	13	16	19	20	25	15	127
Total	26	29	35	23	46	47	56	45	48	40	395
English											
University Park	14	28	20	15	36	26	33	22	11	21	226
Commonwealth Campus	14	33	27	11	36	41	40	50	40	49	341
Total	28	61	47	26	72	67	73	72	51	70	567
Human Development and Family Studies											
University Park	17	24	38	17	36	29	34	24	32	17	268
Commonwealth Campus	40	68	73	14	90	97	96	107	89	96	770
Total	57	92	111	31	126	126	130	131	121	113	1038
Kinesiology											
University Park	21	28	34	28	41	58	49	69	43	31	402
Commonwealth Campus	2	2	4	3	5	4	6	11	4	13	54
Total	23	30	38	31	46	62	55	80	47	44	456
Mechanical Engineering											
University Park	21	38	47	36	59	43	46	35	30	17	372
Commonwealth Campus	4	10	4	2	14	10	10	10	23	23	110
Total	25	48	51	38	73	53	56	45	53	40	482
Psychology BA											
University Park	21	21	28	19	38	16	47	49	63	80	382
Commonwealth Campus	2	5	7	0	11	7	7	16	19	33	107
Total	23	26	35	19	49	23	54	65	82	113	489
Psychology BS											
University Park	16	21	37	32	53	39	36	52	60	58	404
Commonwealth Campus	14	31	42	17	49	34	41	39	62	56	385
Total	30	52	79	49	102	73	77	91	122	114	789

Bold: First Year a Commonwealth
Campuses Program Awarded a Degree

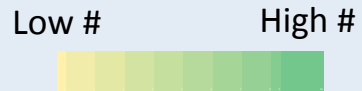
Low #



High #

Percentage of Degrees Awarded to Adult Students 2002-2013

	UP	CC
Accounting	6.4%	35.4%
Biology	12.6%	21.4%
English	13.5%	39.8%
HDFS	16.0%	48.4%
Kinesiology	15.8%	34.0%
Mechanical Engineering	14.5%	21.2%
Psychology BA	17.0%	23.5%
Psychology BS	17.0%	38.2%



Academic Consortia

“The organizational structure of the Commonwealth Campuses and the University College, University Park, new technology developments in course delivery, and the University's commitment to viewing Penn State as one university also enable a consortium of Penn State colleges and/or campuses to integrate faculty, administrative, fiscal, and physical resources to deliver a single academic program . . . [C]onsortium degree authorization and delivery is based upon the sum of consortium resources across members, rather than the presence of all necessary elements within a single campus or academic unit.”

<http://www.psu.edu/oue/aappm/P-0-curricular-principles-and-procedures.html>