

# Putting out the Welcome Mat:



**PENN STATE BERKS  
INITIATIVES THAT INVITE,  
ENCOURAGE, AND ENGAGE  
ADULT LEARNERS**

# What are we doing?



# Solange Israel-Mintz, Adult Student Enrollment Coordinator

---



# Adult Information Session



**AN OPPORTUNITY FOR ADULT  
LEARNERS TO FIND OUT ABOUT PENN  
STATE BERKS PROGRAMS**

**MID- TO LATE JULY**



# Adult New Student Orientation



**SPECIFICALLY DESIGNED TO MEET THE  
NEEDS OF ADULT STUDENTS**

**SAME WEEKEND AS NEW STUDENT  
ORIENTATION FOR TRADITIONAL STUDENTS**

# Adult (24+) Lounge

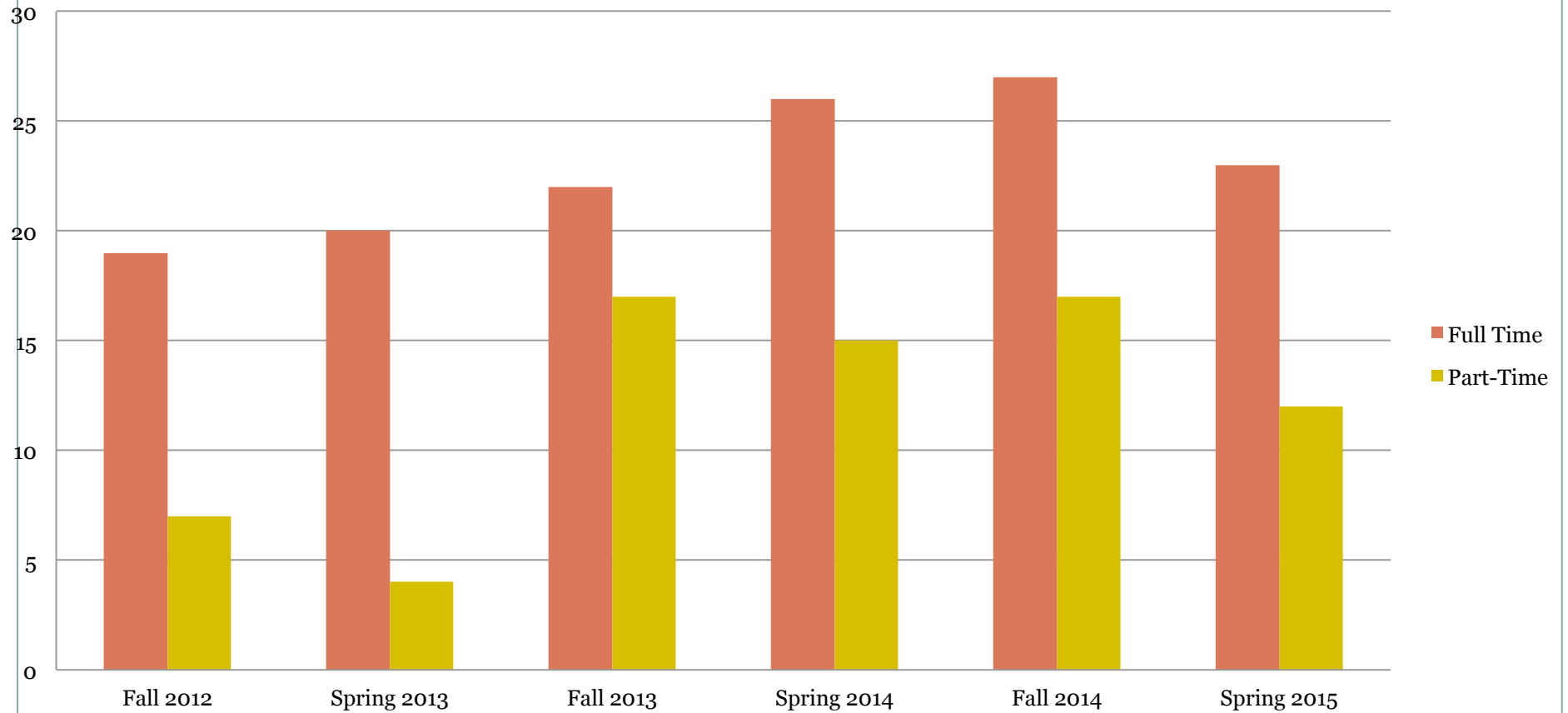


# Adult (24+) Information Board

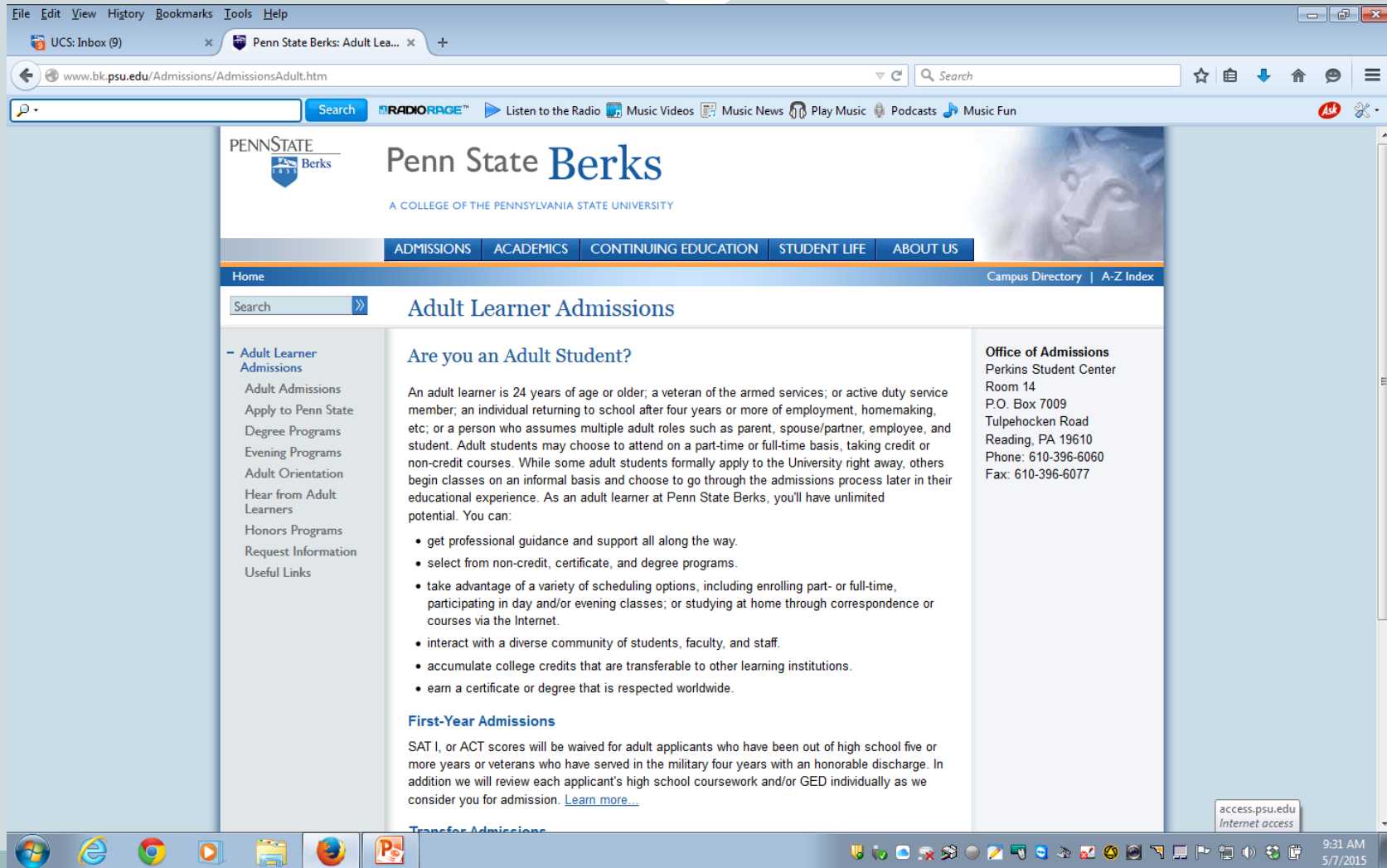




## 24+ Scholarship Recipients



# Web pages specifically for adult learners



The screenshot shows a web browser window displaying the Penn State Berks website. The browser's address bar shows the URL [www.bk.psu.edu/Admissions/AdmissionsAdult.htm](http://www.bk.psu.edu/Admissions/AdmissionsAdult.htm). The website header features the Penn State Berks logo and navigation links for ADMISSIONS, ACADEMICS, CONTINUING EDUCATION, STUDENT LIFE, and ABOUT US. The main content area is titled "Adult Learner Admissions" and includes a search bar. The page is divided into three columns: a left sidebar with a list of links, a central text area with a definition of an adult learner and a list of benefits, and a right sidebar with contact information for the Office of Admissions. The bottom of the browser window shows a Windows taskbar with various application icons and a system clock indicating 9:31 AM on 5/7/2015.

**Penn State Berks**  
A COLLEGE OF THE PENNSYLVANIA STATE UNIVERSITY

ADMISSIONS | ACADEMICS | CONTINUING EDUCATION | STUDENT LIFE | ABOUT US

Home | Campus Directory | A-Z Index

Search » **Adult Learner Admissions**

**Adult Learner Admissions**

- Adult Admissions
- Apply to Penn State
- Degree Programs
- Evening Programs
- Adult Orientation
- Hear from Adult Learners
- Honors Programs
- Request Information
- Useful Links

**Are you an Adult Student?**

An adult learner is 24 years of age or older; a veteran of the armed services; or active duty service member; an individual returning to school after four years or more of employment, homemaking, etc.; or a person who assumes multiple adult roles such as parent, spouse/partner, employee, and student. Adult students may choose to attend on a part-time or full-time basis, taking credit or non-credit courses. While some adult students formally apply to the University right away, others begin classes on an informal basis and choose to go through the admissions process later in their educational experience. As an adult learner at Penn State Berks, you'll have unlimited potential. You can:

- get professional guidance and support all along the way.
- select from non-credit, certificate, and degree programs.
- take advantage of a variety of scheduling options, including enrolling part- or full-time, participating in day and/or evening classes; or studying at home through correspondence or courses via the Internet.
- interact with a diverse community of students, faculty, and staff.
- accumulate college credits that are transferable to other learning institutions.
- earn a certificate or degree that is respected worldwide.

**First-Year Admissions**

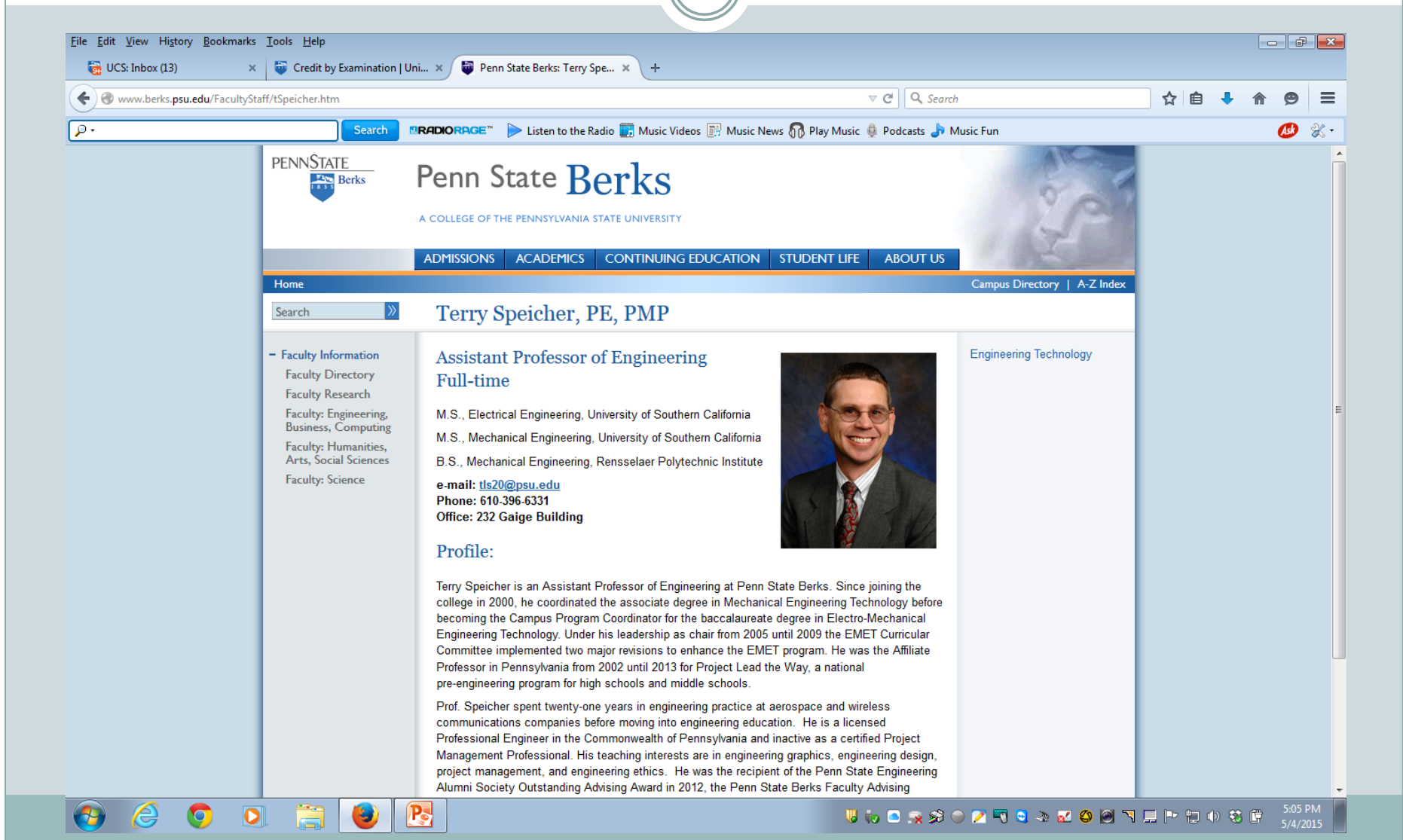
SAT I, or ACT scores will be waived for adult applicants who have been out of high school five or more years or veterans who have served in the military four years with an honorable discharge. In addition we will review each applicant's high school coursework and/or GED individually as we consider you for admission. [Learn more...](#)

**Office of Admissions**  
Perkins Student Center  
Room 14  
P.O. Box 7009  
Tulpehocken Road  
Reading, PA 19610  
Phone: 610-396-6060  
Fax: 610-396-6077

[access.psu.edu](#)  
Internet access

9:31 AM  
5/7/2015

# Faculty who give Credit for Prior Learning Experiences



The screenshot shows a web browser window with the address bar displaying [www.berks.psu.edu/FacultyStaff/tSpeicher.htm](http://www.berks.psu.edu/FacultyStaff/tSpeicher.htm). The browser's menu bar includes File, Edit, View, History, Bookmarks, Tools, and Help. The address bar also shows tabs for UCS: Inbox (13), Credit by Examination | Uni..., and Penn State Berks: Terry Spe....

The Penn State Berks website header features the college's logo and name, "Penn State Berks", with the tagline "A COLLEGE OF THE PENNSYLVANIA STATE UNIVERSITY". Navigation links include ADMISSIONS, ACADEMICS, CONTINUING EDUCATION, STUDENT LIFE, and ABOUT US. A search bar is located in the top left of the main content area.

The main content area displays the profile of Terry Speicher, PE, PMP, an Assistant Professor of Engineering. The profile includes a photograph of Terry Speicher, a man with glasses and a suit, and a list of his qualifications: M.S., Electrical Engineering, University of Southern California; M.S., Mechanical Engineering, University of Southern California; and B.S., Mechanical Engineering, Rensselaer Polytechnic Institute. His contact information is listed as e-mail: [tls20@psu.edu](mailto:tls20@psu.edu), Phone: 610-396-6331, and Office: 232 Gaige Building.

The profile also includes a "Profile:" section with a detailed biography. Terry Speicher is an Assistant Professor of Engineering at Penn State Berks. Since joining the college in 2000, he coordinated the associate degree in Mechanical Engineering Technology before becoming the Campus Program Coordinator for the baccalaureate degree in Electro-Mechanical Engineering Technology. Under his leadership as chair from 2005 until 2009 the EMET Curricular Committee implemented two major revisions to enhance the EMET program. He was the Affiliate Professor in Pennsylvania from 2002 until 2013 for Project Lead the Way, a national pre-engineering program for high schools and middle schools. Prof. Speicher spent twenty-one years in engineering practice at aerospace and wireless communications companies before moving into engineering education. He is a licensed Professional Engineer in the Commonwealth of Pennsylvania and inactive as a certified Project Management Professional. His teaching interests are in engineering graphics, engineering design, project management, and engineering ethics. He was the recipient of the Penn State Engineering Alumni Society Outstanding Advising Award in 2012, the Penn State Berks Faculty Advising

The browser's taskbar at the bottom shows various application icons, including Internet Explorer, Google Chrome, and Microsoft Word. The system clock in the bottom right corner indicates the time is 5:05 PM on 5/4/2015.





# Office of the University Registrar

[eLion](#) | [Schedule of Courses](#) | [Academic Calendars](#) | [Faculty/Staff](#) | [Contact](#) | [About Us](#)

Registrar

Search

[Twitter icon](#)



## Ask the Lion

Type a complete question, such as "How do I order a transcript?"

Ask

Top10

[Academic Actions](#)

[Academic Calendars](#)

[Academic Verifications](#)

[College of Campus](#)

[Confidentiality/FERPA](#)

[Degree Audit](#)

[Degrees](#)

[Degrees](#)

[Education](#)

[Enrolling the University](#)

[Programs and Majors](#)

[Registration](#)

[Returning to the University](#)

[Student Amendment](#)

[Schedule of Courses](#)

[Student Forms](#)

[Transcripts](#)

[Transfer Credits](#)

## Credit by Examination

A student may request a challenge examination as a substitute for completing the usual requirements of a course. If the examination is successfully completed the credits received are described as "credits by examination" ([policy 42-50](#)).

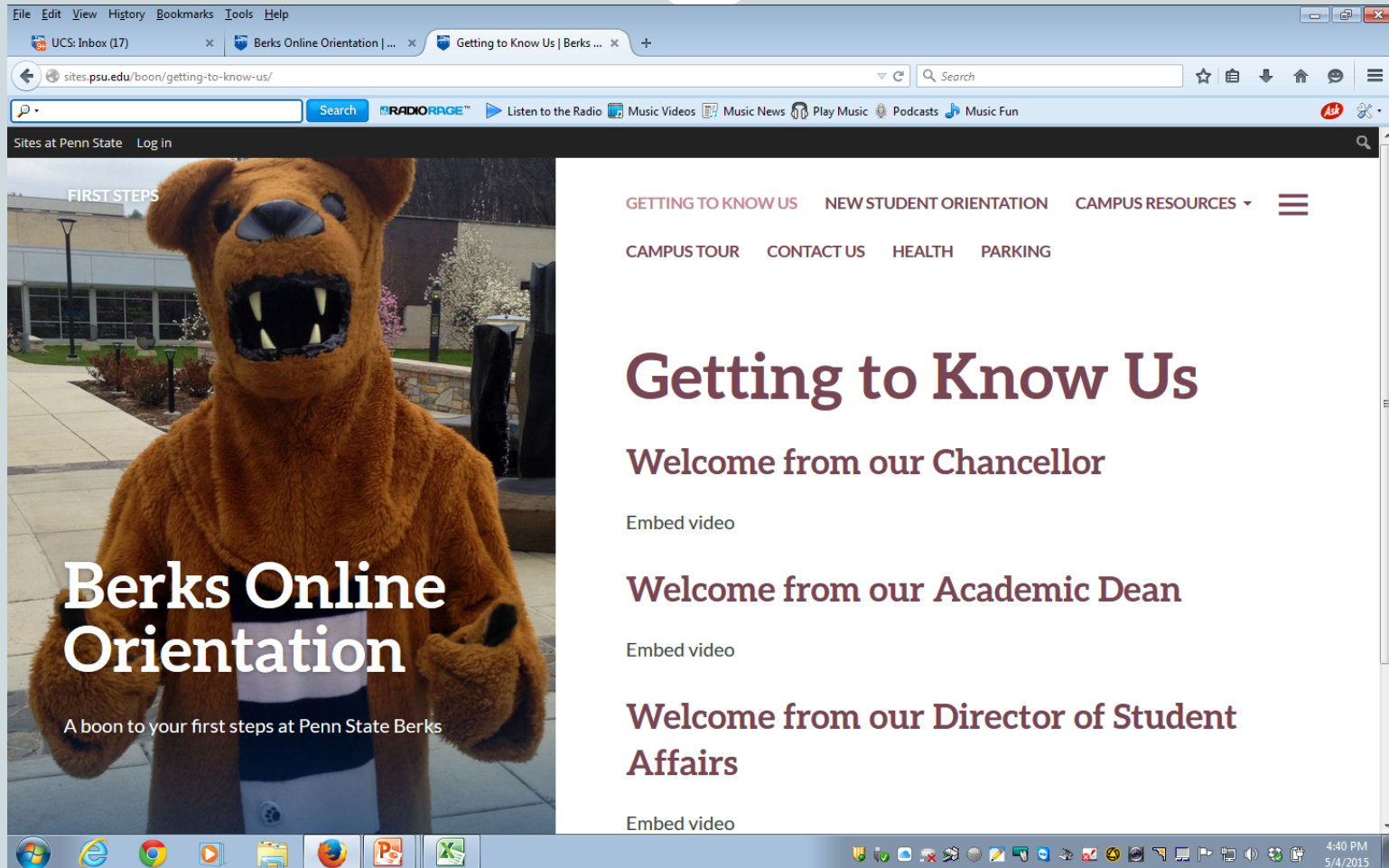
- May not be used to earn credit for a course previously completed with a quality letter grade (including courses that were failed).
- May not be attained on the satisfactory grading system.
- Credit by Examination may not be possible for some courses.
- Grades of "C" or above must be attained to receive credit for the course.
- No notation is made if a grade of "D" or "F" is earned.

### Process:

1. Obtain a Credit-by-Examination Application Form from your [college dean](#), and follow the directions listed on the back of the form.
2. A \$30.00 assessment is made per credit.



<https://sites.psu.edu/boon>



# Adult Fitness Program





ALPHA SIGMA  
LAMBDA



# World Campus Students



**PROCTORING OF EXAMS FOR STUDENTS  
ENROLLED AT PENN STATE BERKS**

**TUTORING FOR STUDENTS ENROLLED AT  
PENN STATE**

# Joe Webb, Director of Student Services





# Finding candidates is easy. Finding the right candidate isn't.

Discover how Military Friendly® can help you attract and retain military candidates.

LEARN MORE

## Our Military Friendly® Lists

ins

Search

RADIO RAGE™



Listen to the Radio



Music Videos



Music News



Play Music



Podcasts



Music Fun



CAREER

EDUCATION

GETTING OUT

f 6.7K

t 3.4K

g+ 79

in 735



SIGN UP

## Military Friendly Survey Results



2015 Military Friendly Status

1 Year on Military Friendly



On-Campus Military Support ?



Credit Acceptance ?



School Offered Tuition Assistance ?



Spouse and Dependent ?



Flexibility ?

Schools that have earned the elite Military Friendly® designation have demonstrated a commitment to supporting student veterans on campus and in their careers.

## School Information

### About Penn State Berks

With the resources and opportunities of a major research university in a welcoming, student-centered environment, Penn State Berks offers a unique learning experience to 2,771 full-and-part-time students. Penn State Berks is a four-year, residential college offering twenty bachelor's degrees, and seven associate degree programs. The experiences



National University College  
Online Division  
San Juan, PR

Request Info

+ Favorite



Stratford University  
Fairfax, VA

Request Info

+ Favorite



Academy of Art University  
San Francisco, CA

## Veterans Services

### - Veterans

[Veterans Services](#)[Applying for Benefits](#)[Types of Benefits](#)[Military Credit](#)[Resources for Veterans](#)[Enrollment Certification Form](#)[Priority Registration for Veterans](#)

### - Campus Resources

[Admissions](#)[Financial Aid](#)[Health Services](#)[Career Services](#)[Counseling Services](#)[Paying your PSU Bill](#)

Our mission is to provide a caring, supportive environment for veterans and their dependents. Veterans benefits and services in order to be successful at Penn State Berks.



### Applying for Benefits

[How to apply for veterans' benefits »](#)

### Types of Benefits

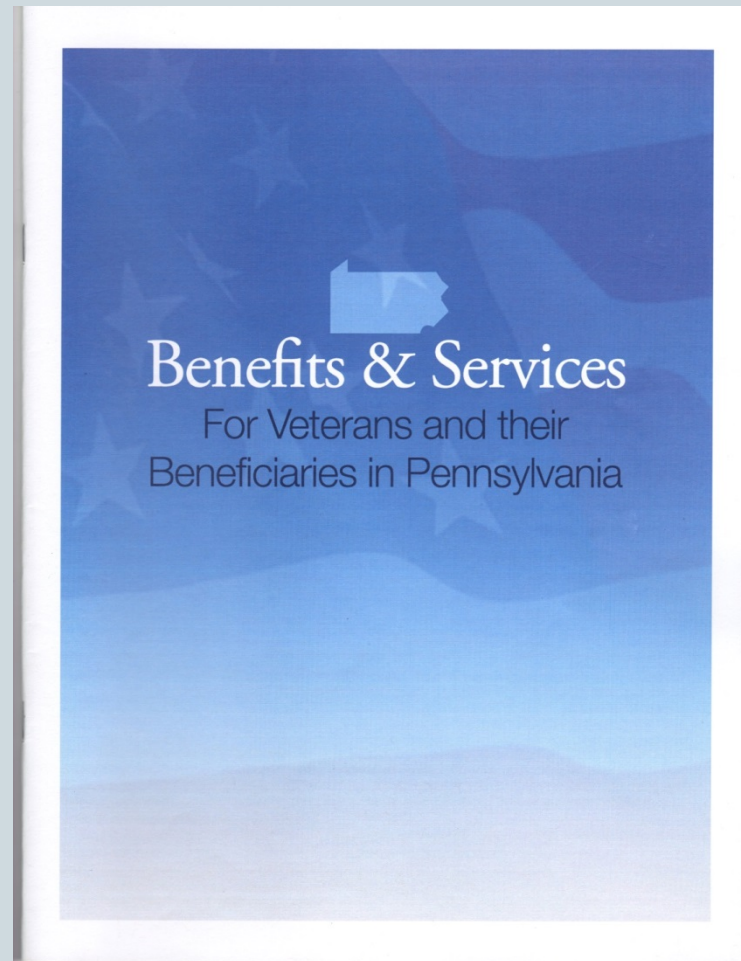
[Learn about types of veterans' benefits »](#)

### Military Credit

[Are you eligible for military credit? »](#)



[http://www.milvet.state.pa.us/DMVA/  
Docs\\_BVA/dmvastatebenefits.pdf](http://www.milvet.state.pa.us/DMVA/Docs_BVA/dmvastatebenefits.pdf)



<http://www.studentveterans.org/>



# Special Programming for Vets



## **Penn State Berks**

### **African American History Month: Honoring Our Veterans**



Penn State Berks will hold its annual African American History Month: Honoring Our Veterans program on **Monday, February 23rd at 1:00 pm in the Perkins Student Center (Multipurpose Room)**

As we celebrate Black History month, it's important to honor those African-American men and women who have served in our armed forces throughout American history. WWII Veteran Calvin Summers of Reading, PA, will serve as the guest speaker. Mr. Summers served with the 5th Army Express in North Africa, Italy, and the Pacific. Following the program lunch and desert will be provided.

All members of the Penn State Berks community are encouraged to attend.

Please RSVP to [jjw26@psu.edu](mailto:jjw26@psu.edu) no later than Friday, February 20th.

The Office of Student Support Services welcomes person with disabilities. If you need assistance or have any questions please contact Joe Webb at (610) 396-6072 or via e-mail at [jjw26@psu.edu](mailto:jjw26@psu.edu)

# Student Veterans Coalition





# ROY G. BIV Color Run – Students Veterans Coalition: Event #1



# ROY G. BIV Color Run







<http://www.drdangottlieb.com/2014/11/30/dans-tedxpsu-berks-talk-on-video/>

# Natalie's Bartush – Admissions Transfer Counselor





# ESL Initiatives

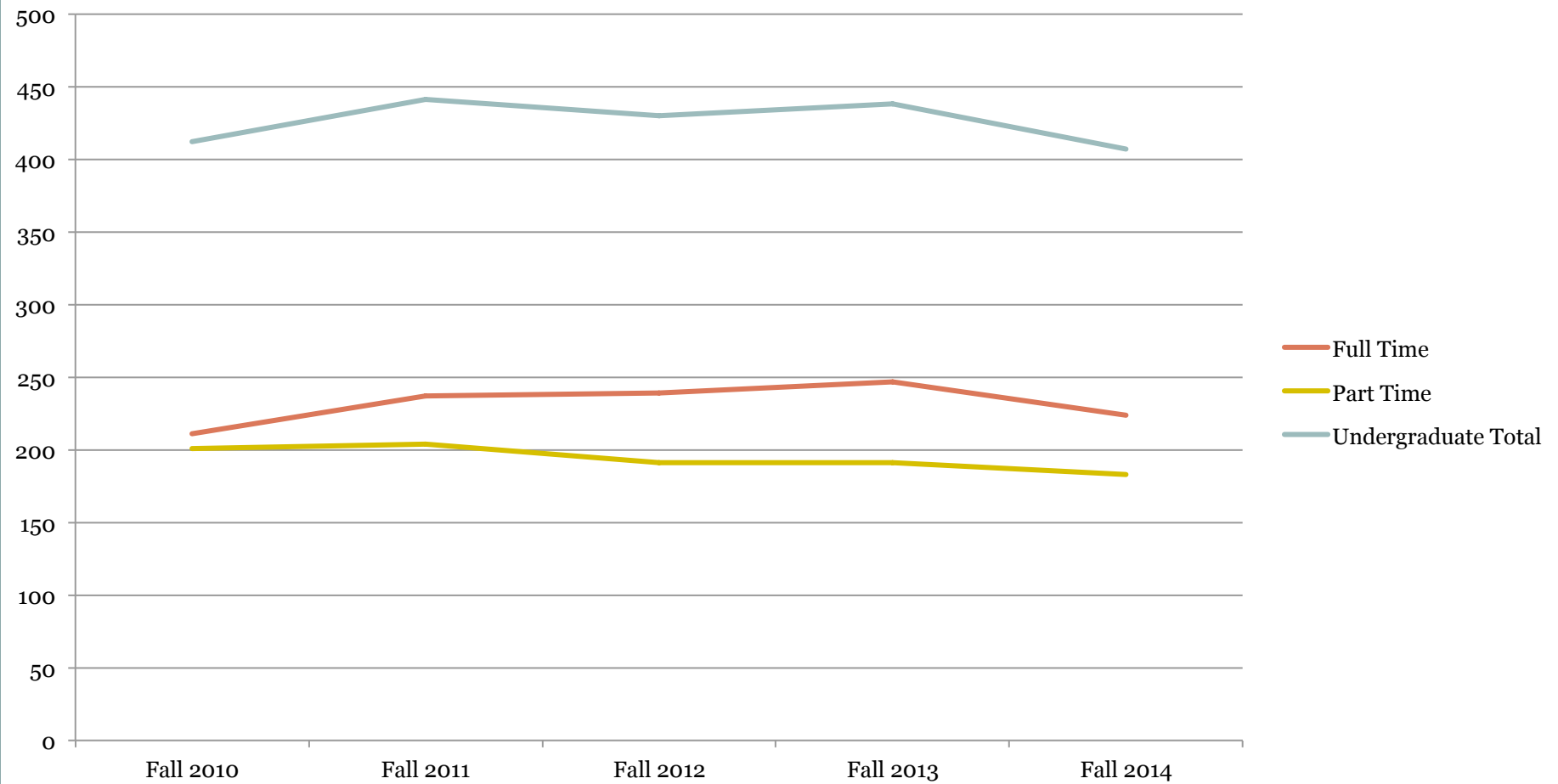


So.....do all of these initiatives  
really make a difference?



**WHAT THE NUMBERS TELL US**

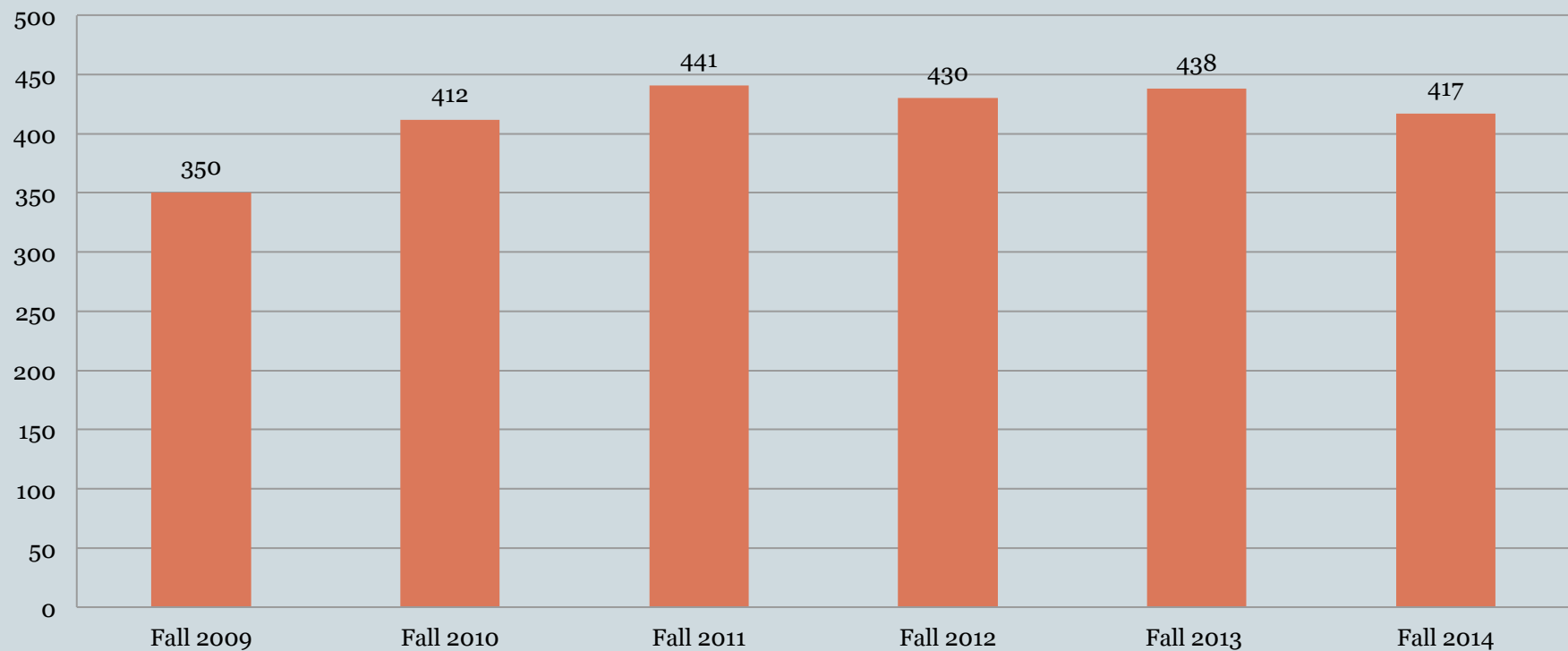
## Adult Full Time & Part Time Berks Undergraduates



# Berks Adult Enrollments for Fall Semesters



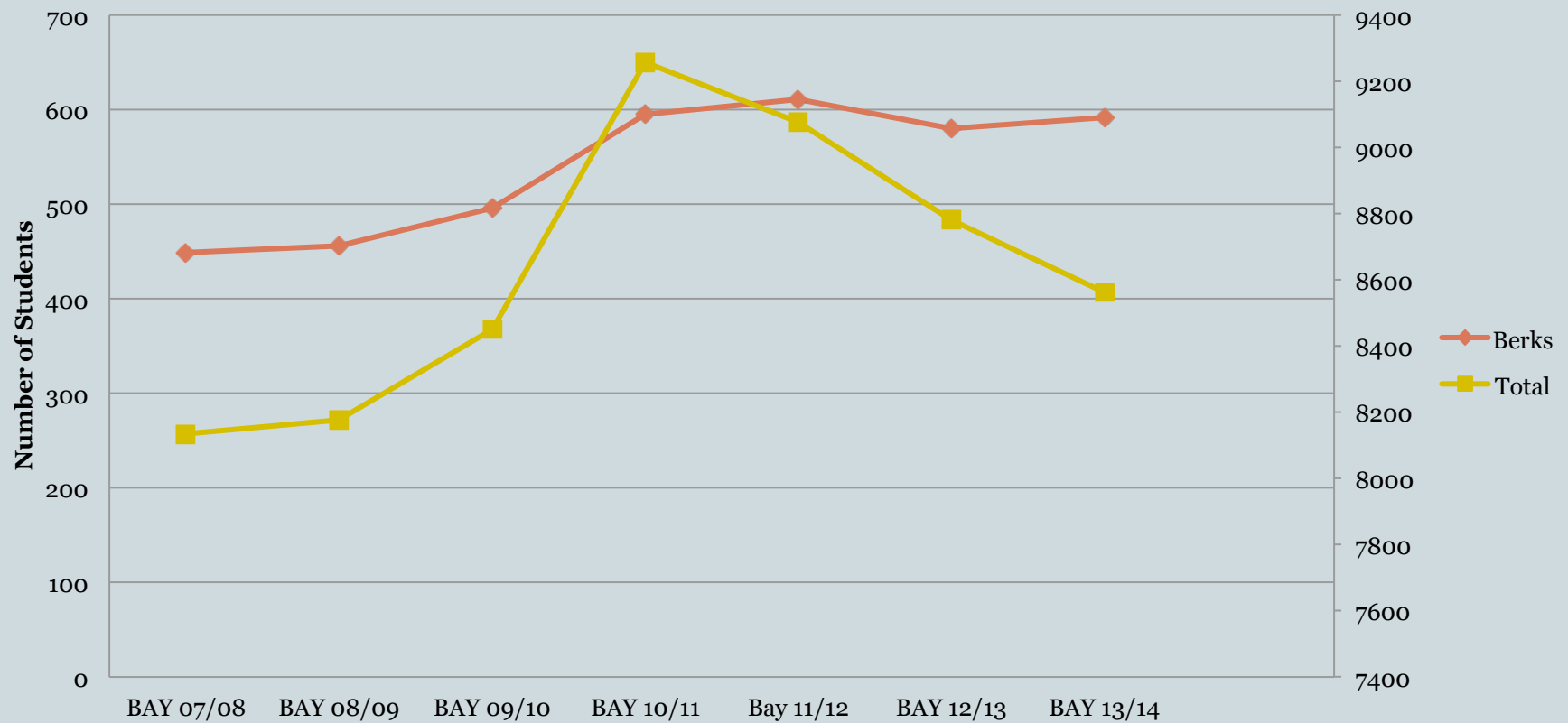
## **Berks Adult Undergraduate Official Enrollment for Fall Semesters**



# Berks Adult Enrollment vs. other non-UP Campuses



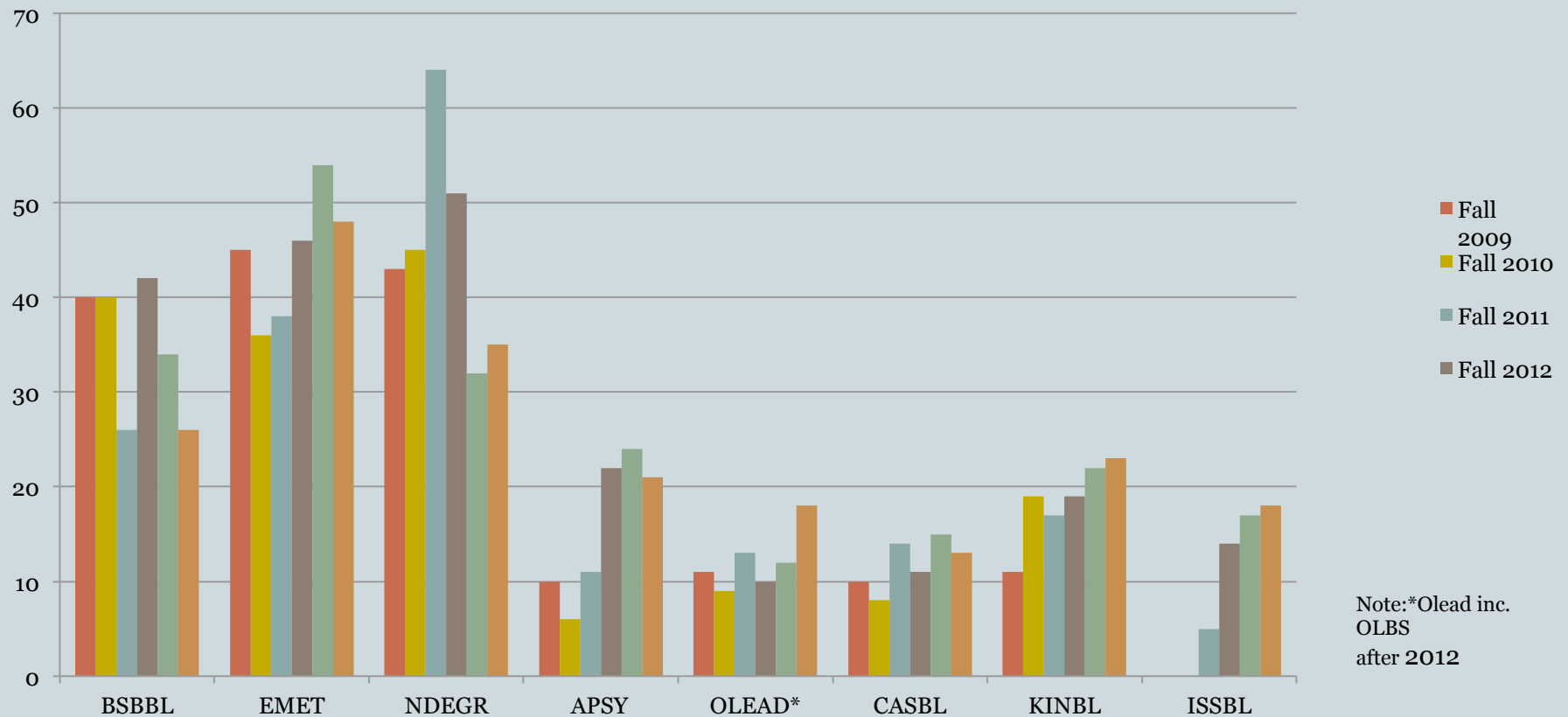
## Adult Student Enrollment\* (\*excluding WD & UP)



# Berks Adult Enrollments by Major



## Adult Enrollment 2009-14 BY Major



# OLEAD Enrollments



## OLEAD ENROLLMENT BY CAMPUS Fall 2013-Spring 2015

