

# Pennsylvania State Data Center Recruitment Responding to Changes

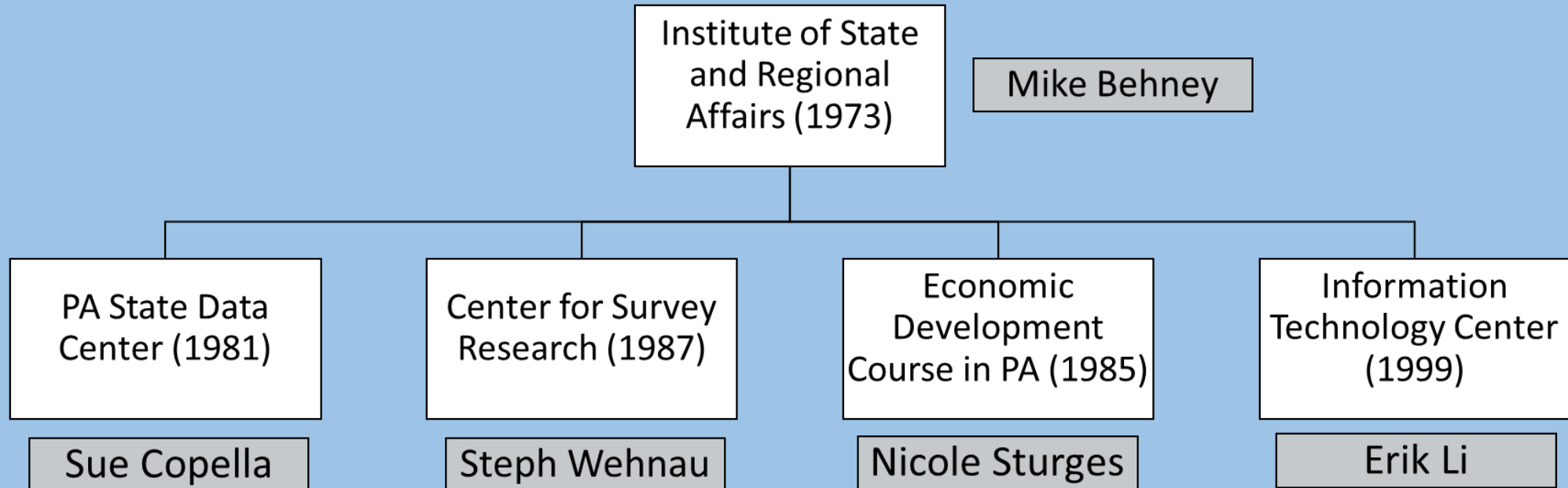


**PennState**

Hendrick Best Practices for  
Adult Learners Conference

May 9, 2018

The Institute serves as a “one-stop-shop” for data needs, and clients/projects benefit from the collaborative interaction between these related centers.



Clients are varied and come from government, academia, as well as the public and private sector

- **Government:** PA Game Commission; PA Turnpike Commission; PA Commission on Crime and Delinquency; PA Departments of Drug and Alcohol Programs, Education, Labor and Industry, Health, Aging...
- **Academia:** Penn State Harrisburg (administration and faculty), Hershey Medical Center, Penn State Schuylkill, Penn State Great Valley
- **Public and Private Sector:** PA Association of Community Health Centers, PA State Boroughs Association, United Way of the Capital Region, United Way of Lebanon County...



# Pennsylvania State Data Center

Who

- We are the Commonwealth's Official Source for Population and Socio-Economic Statistics

What

- Liaison to U.S. Census Bureau

When

- Established in 1981 by Executive Order of the Governor

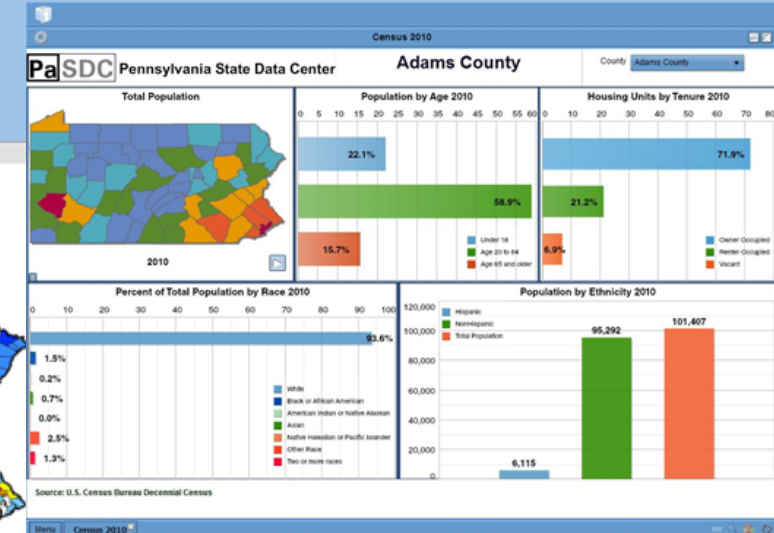
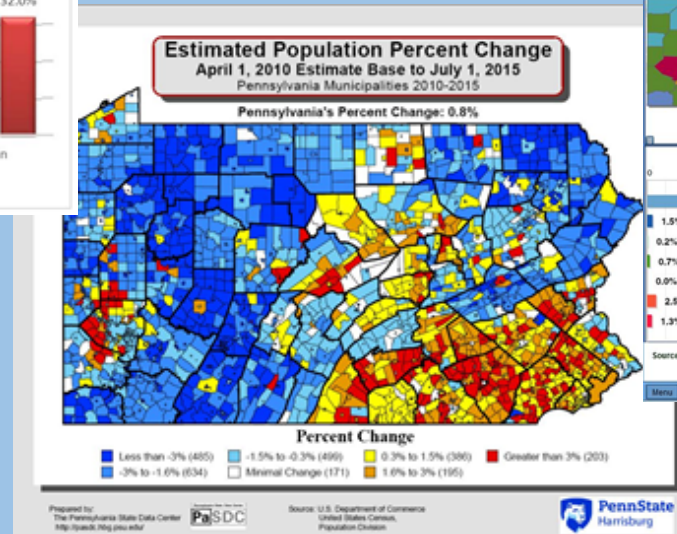
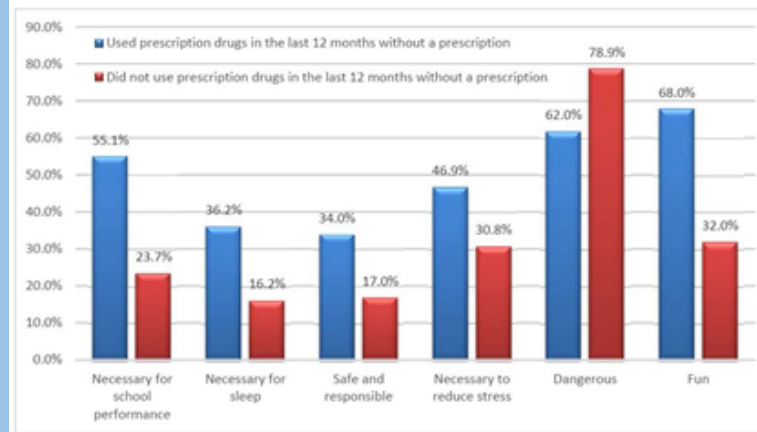
Where

- Located at Penn State Harrisburg within the Institute of State and Regional Affairs



The PaSDC services and skills include: data expertise, collection, and management; statistical analysis; visualization; training and professional education; and technology solutions

Figure 6. Respondents' Indications of What Friends Would Say about Prescription Drug Use without a Prescription, by Usage Status within the Last 12 Months



# We help people with....

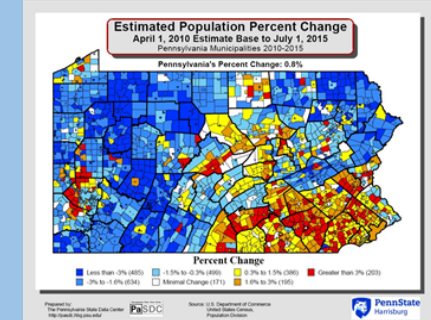
## Acquire

- Data is ...
  - collected
  - processed
  - organized

## Analyze

- Data analysis
- Custom programming

## Visualize



- Mapping/geospatial services
- Visualization including dashboards



PennState

Hendrick Best Practices for  
Adult Learners Conference

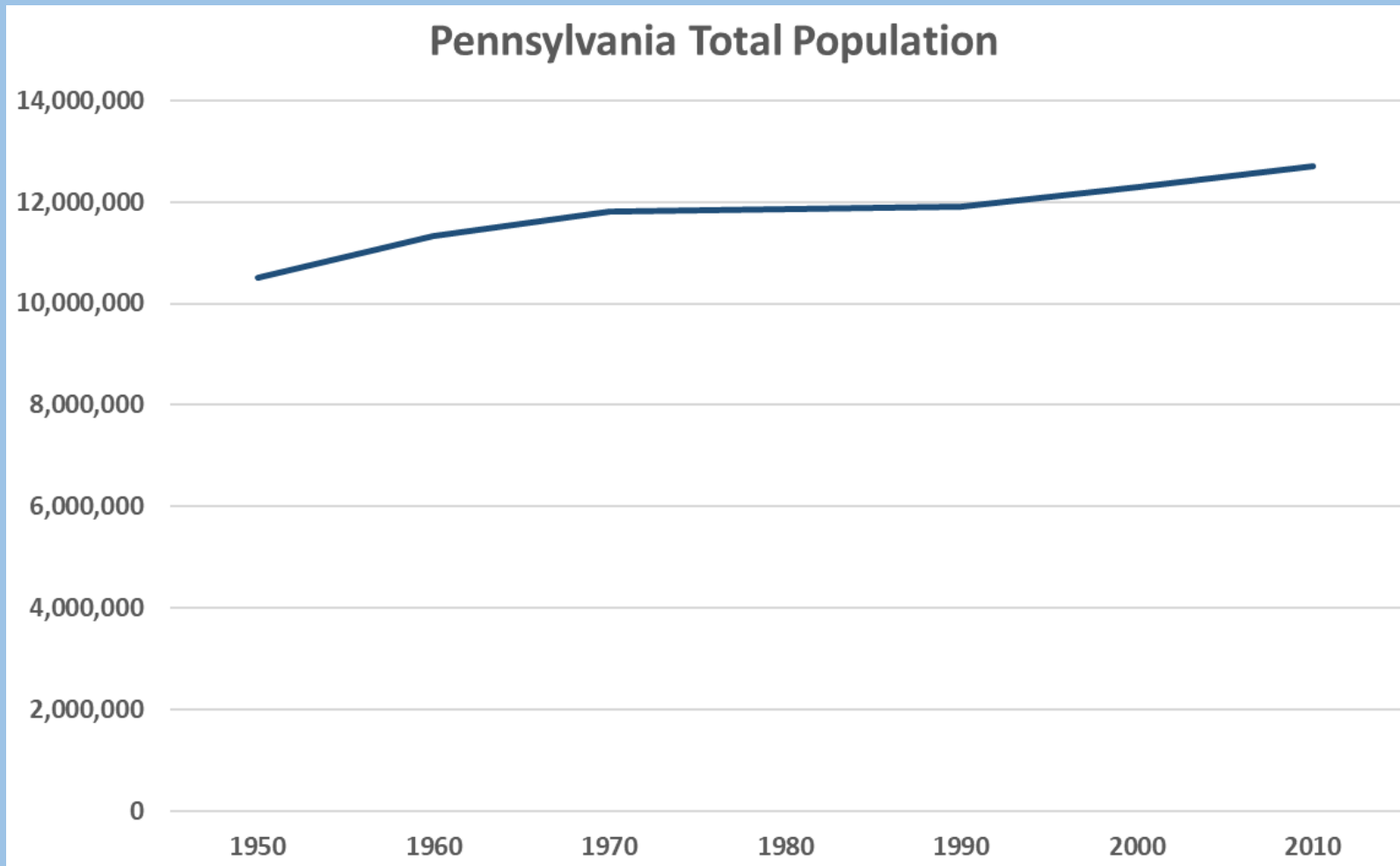
May 9, 2017

# Demographic Trends

- The state's population showed an overall decline in 2016 for the first time since the 1980s. This trend has since reversed based on the 2017 population estimates
- Pennsylvania is a slow growth state
- School age population has declined since 2010
- There has been a change in the trend of movement “out of the cities”
- Growth is in the Southeast and Southcentral counties
- Minority populations are growing in PA – African American, Asian, Hispanic
- The Hispanic population has more than doubled in the state since 2000.

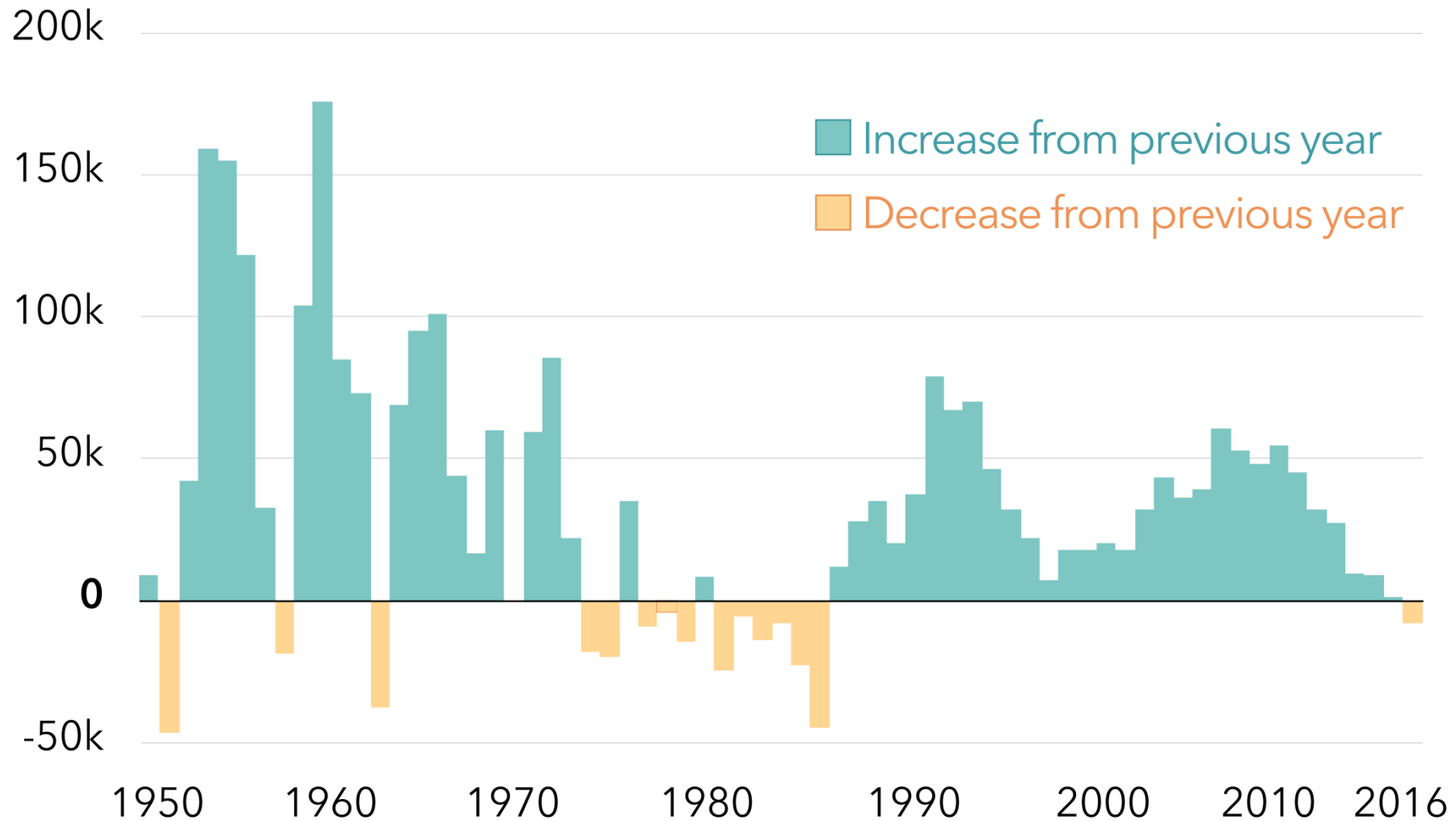


# Decennial Population

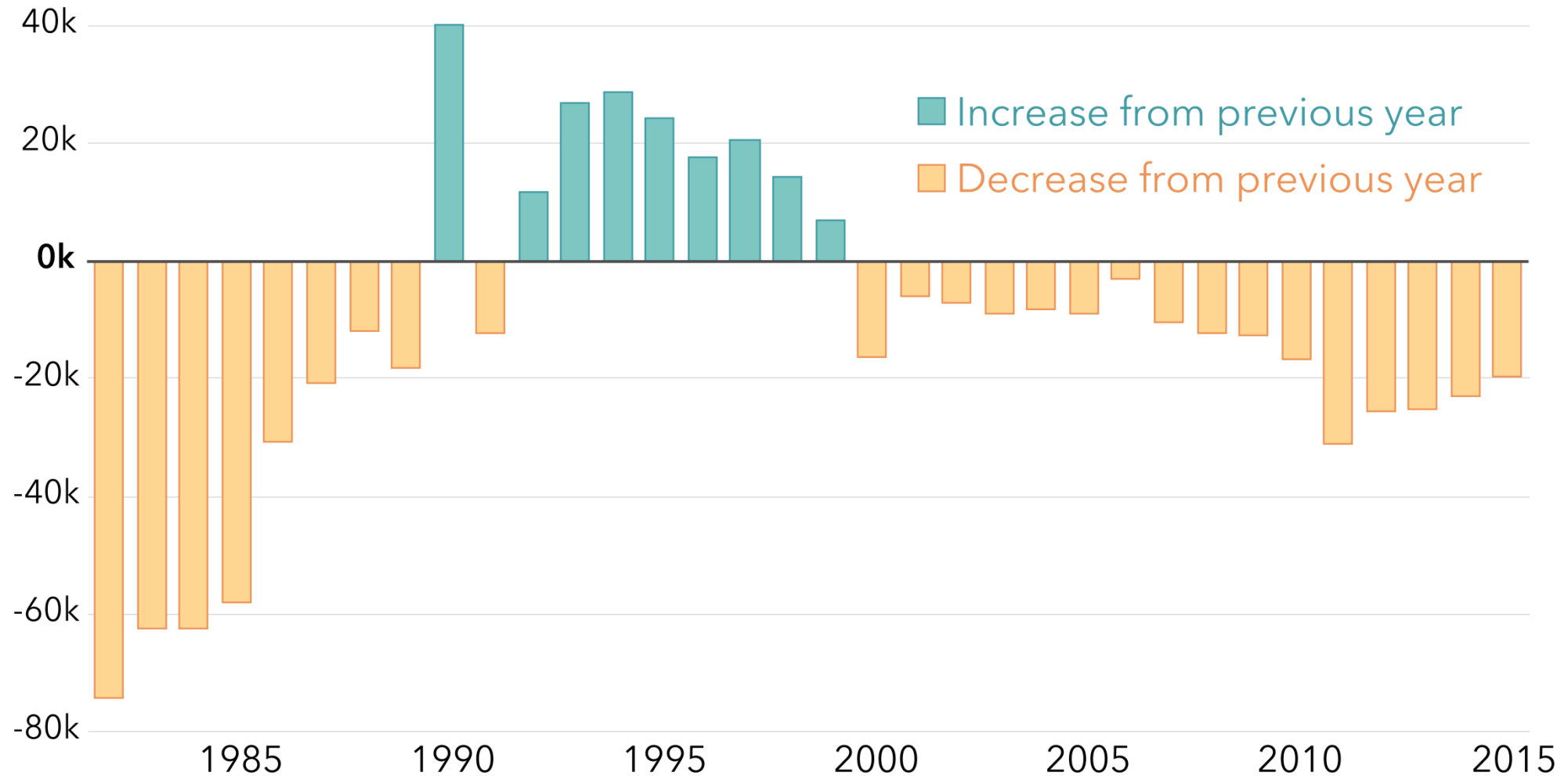




## *Pennsylvania Population Change by Year*



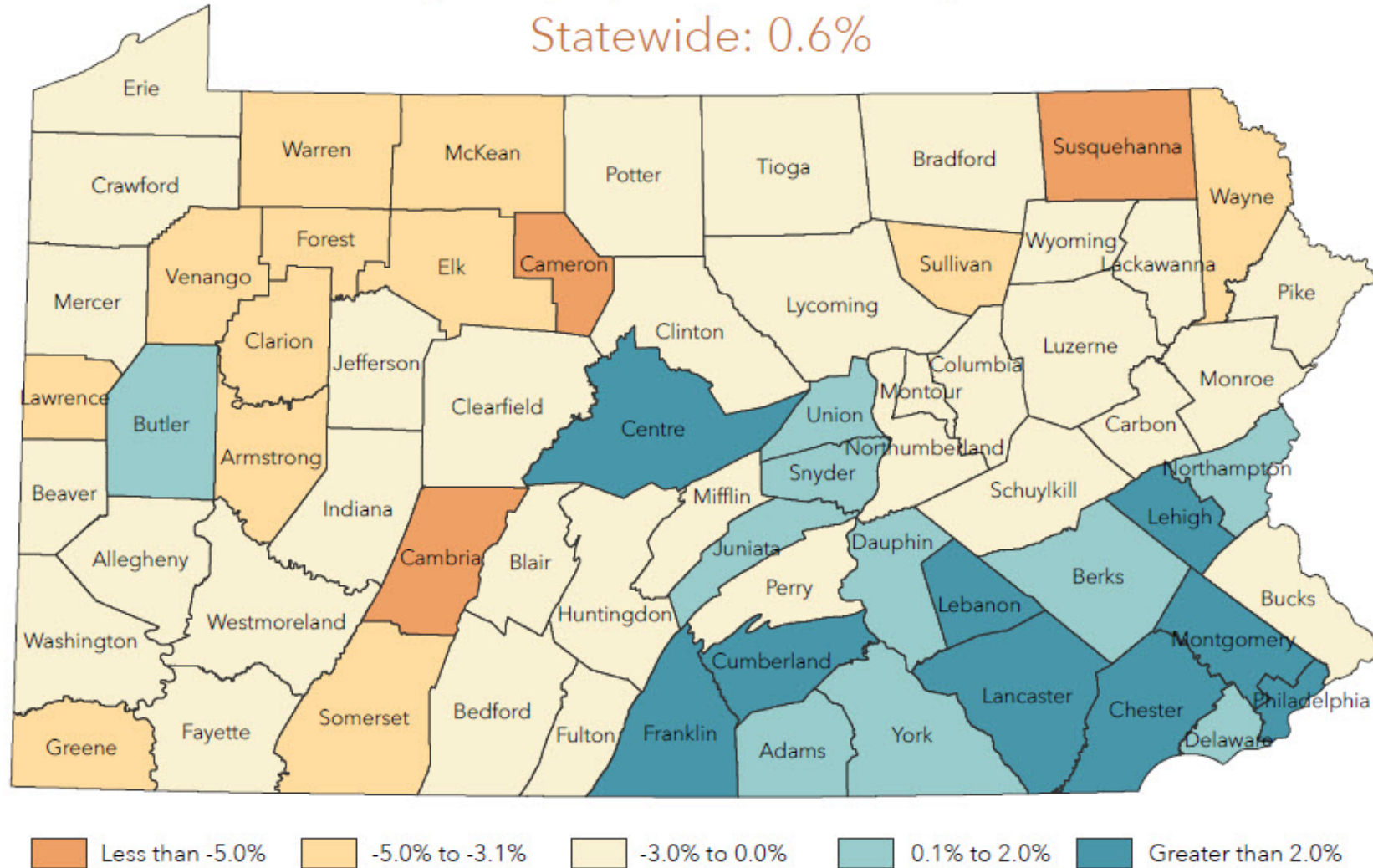
## Change in School-Age Population from Previous Year, 1980 to 2015



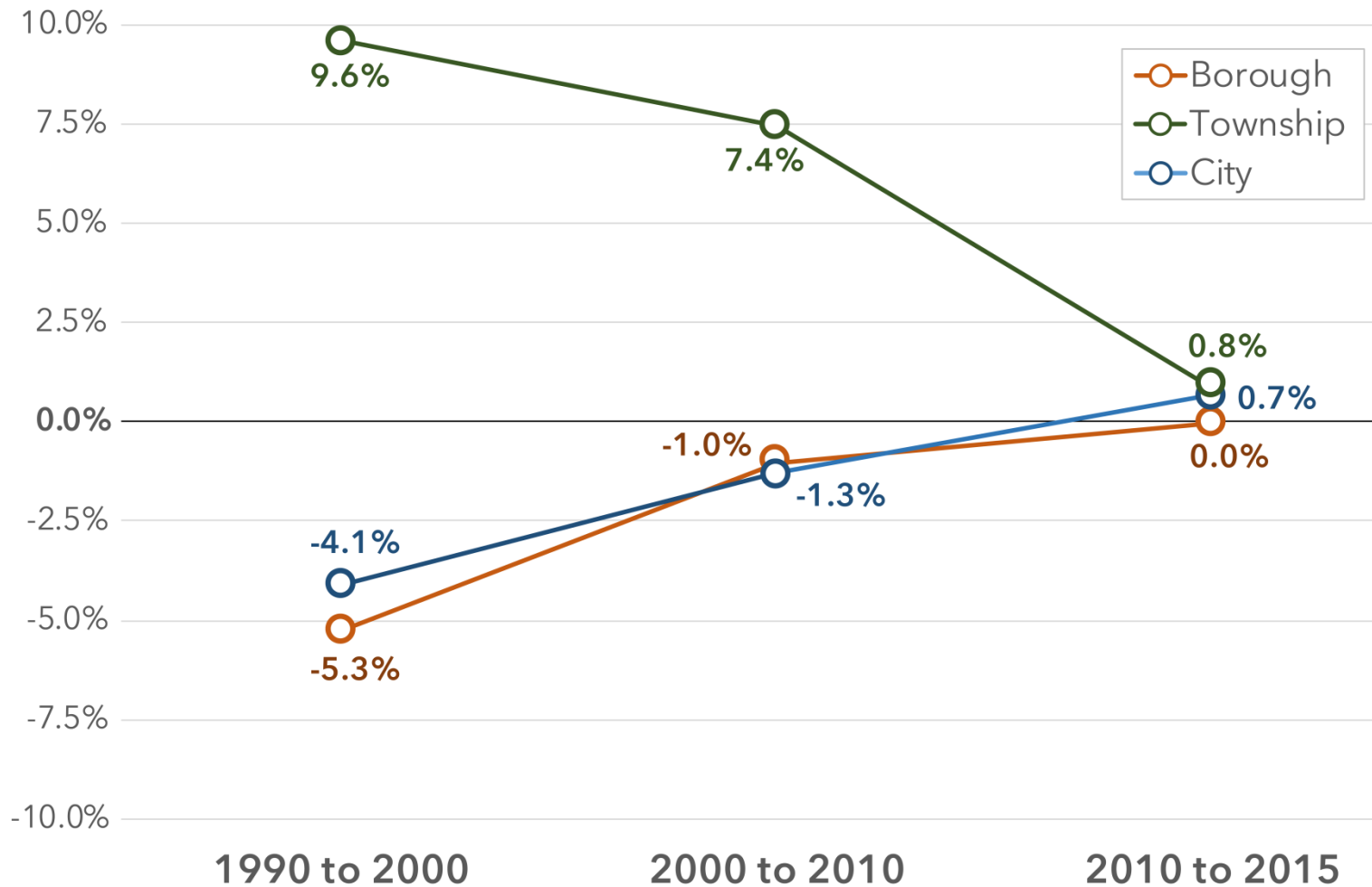
## Pennsylvania 2016 County Population Estimates

### Percentage Change April 1, 2010 Base to July 1, 2016

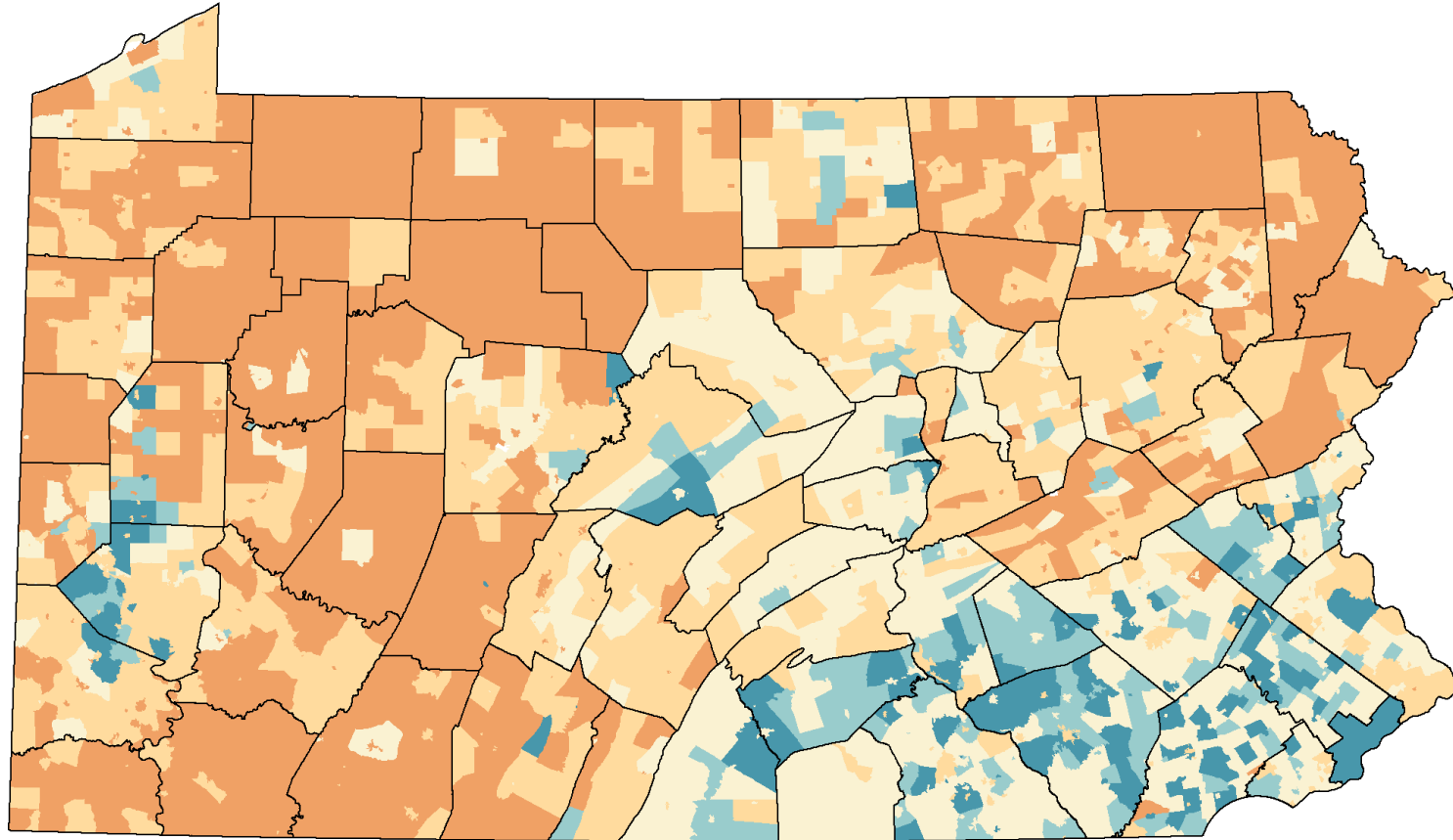
Statewide: 0.6%



## *Percent Change in Boroughs, Townships, and Cities in Pennsylvania*



## Change in Population Pennsylvania's Municipalities, 2010 to 2016



Percent Change

Less than -2.5%   -2.5% to -0.1%   0.0% to 2.5%   2.6% to 5.0%   Greater than 5.0%

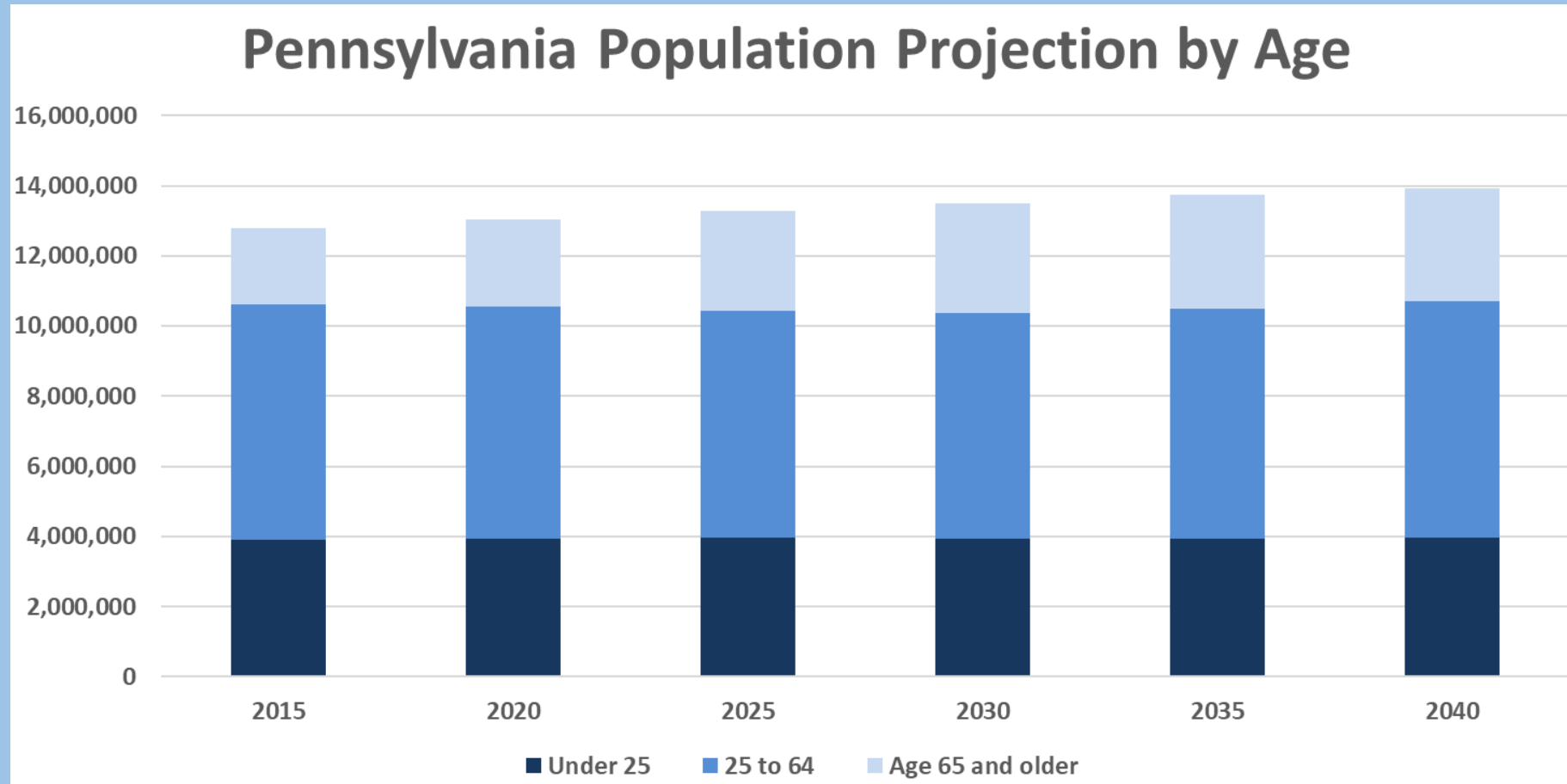


PennState

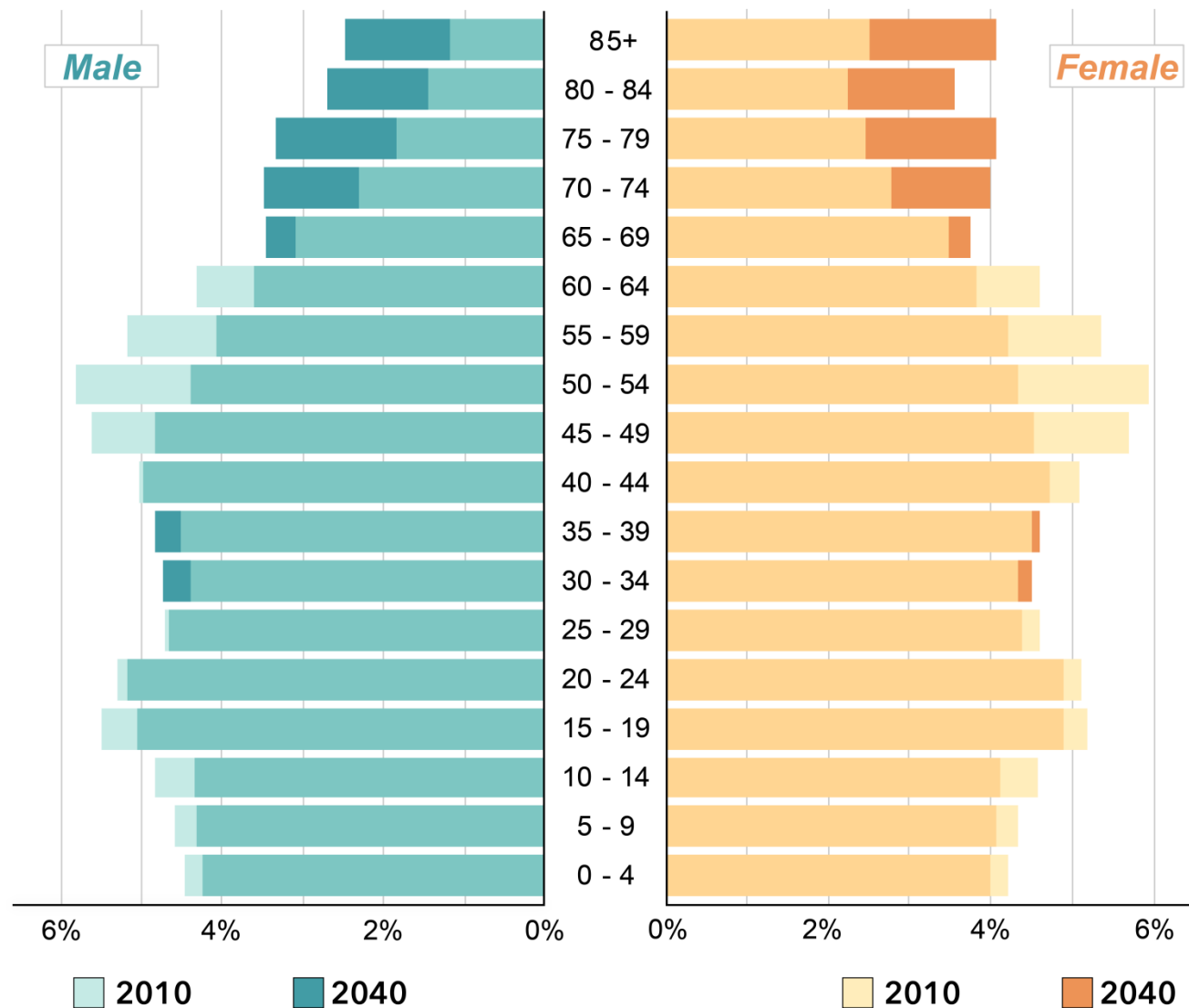
Hendrick Best Practices for  
Adult Learners Conference

May 9, 2017

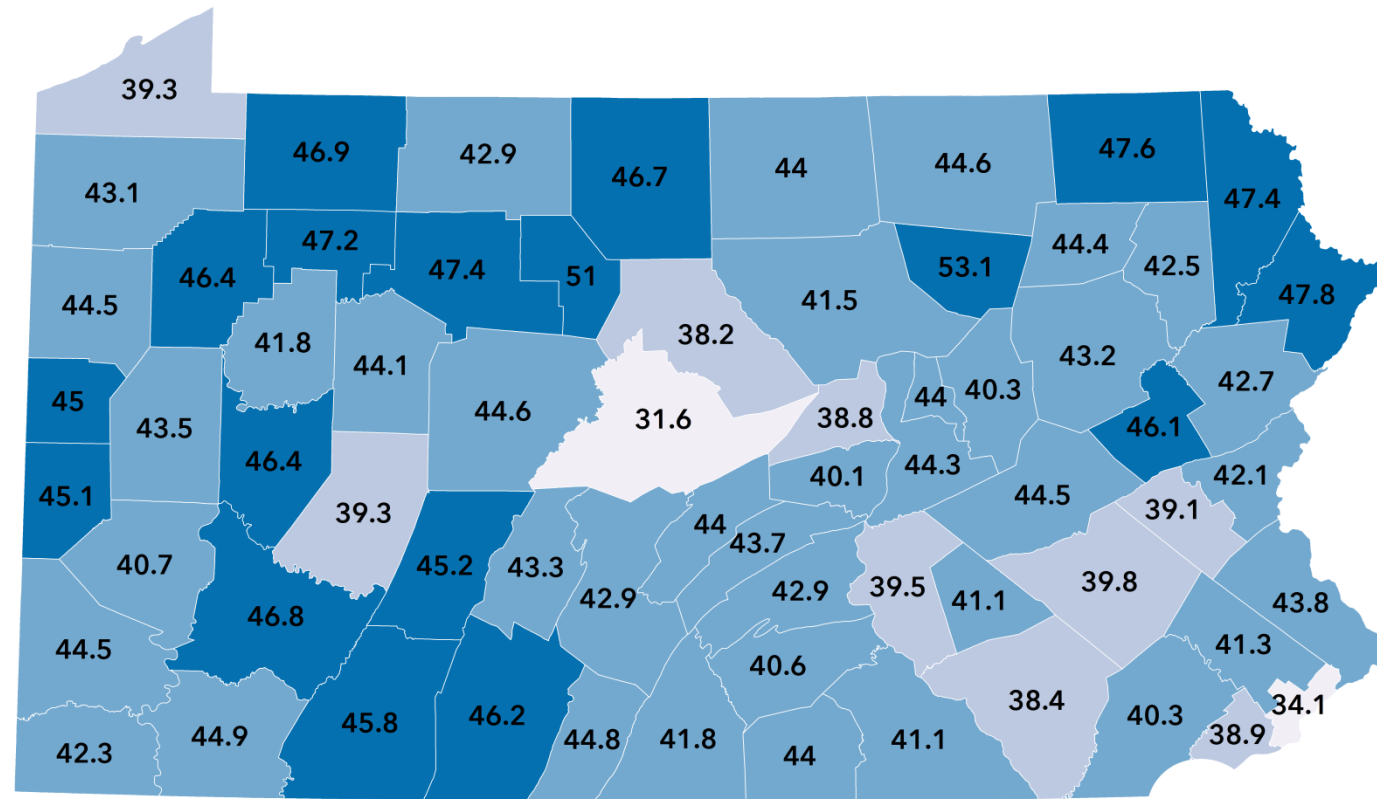
# Population Projections



Population Pyramid of Pennsylvania for 2010 and 2040 (Projected)



## Median Age in Pennsylvania by County, 2016



Less than 35.0   35.0 to 39.9   40.0 to 44.9   45.0 or Greater



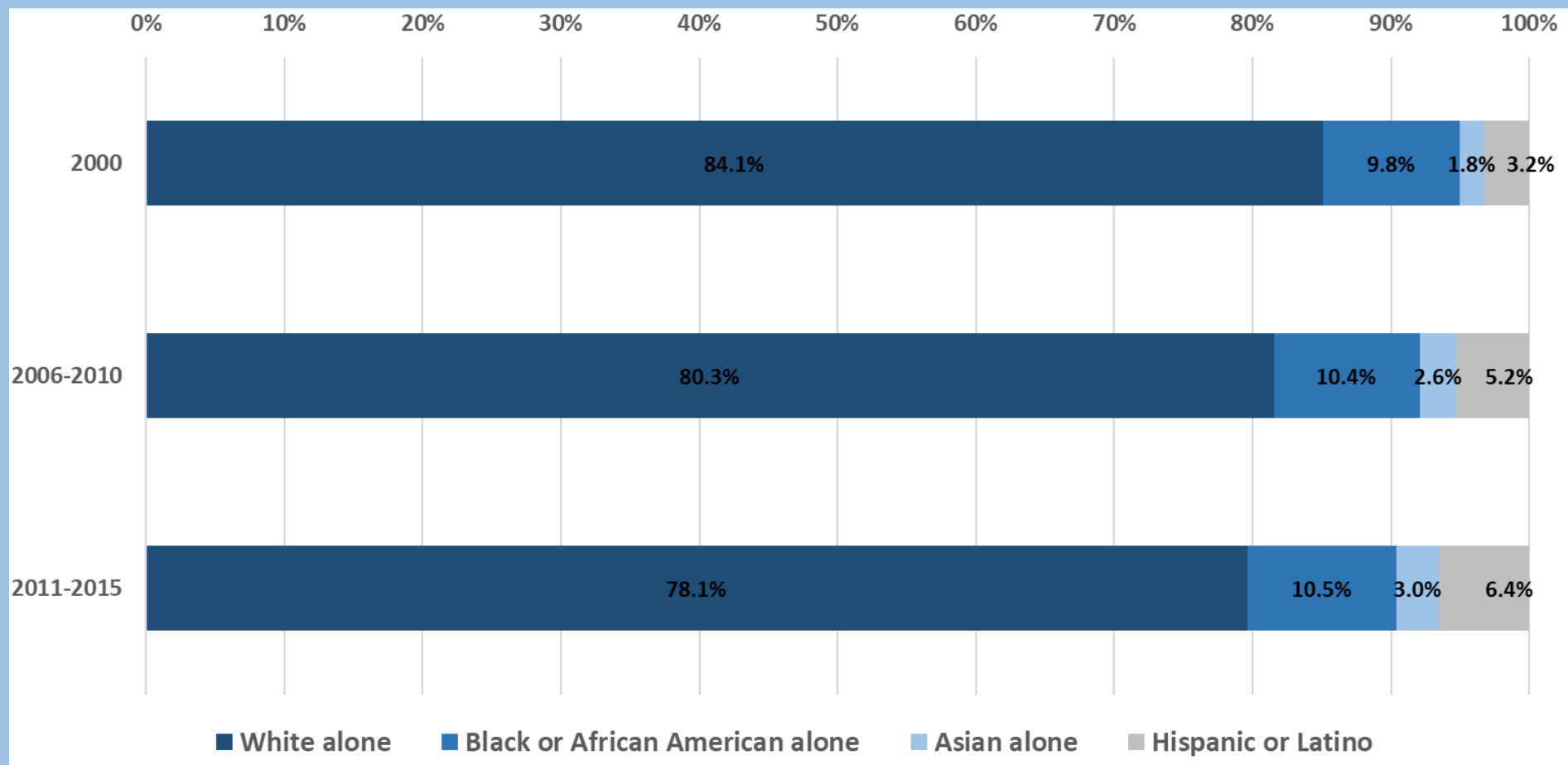
PennState

Hendrick Best Practices for  
Adult Learners Conference

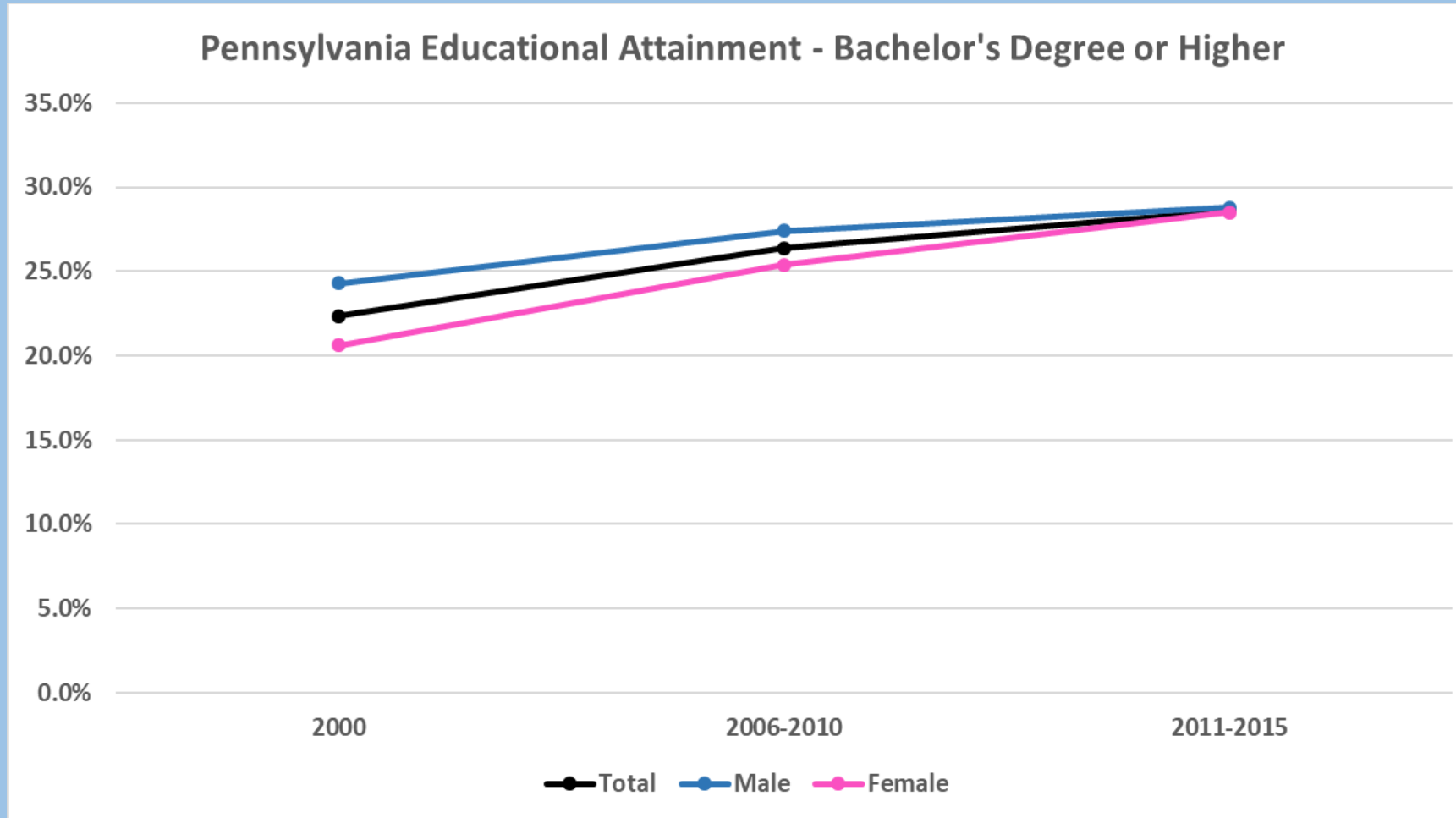
May 9, 2017



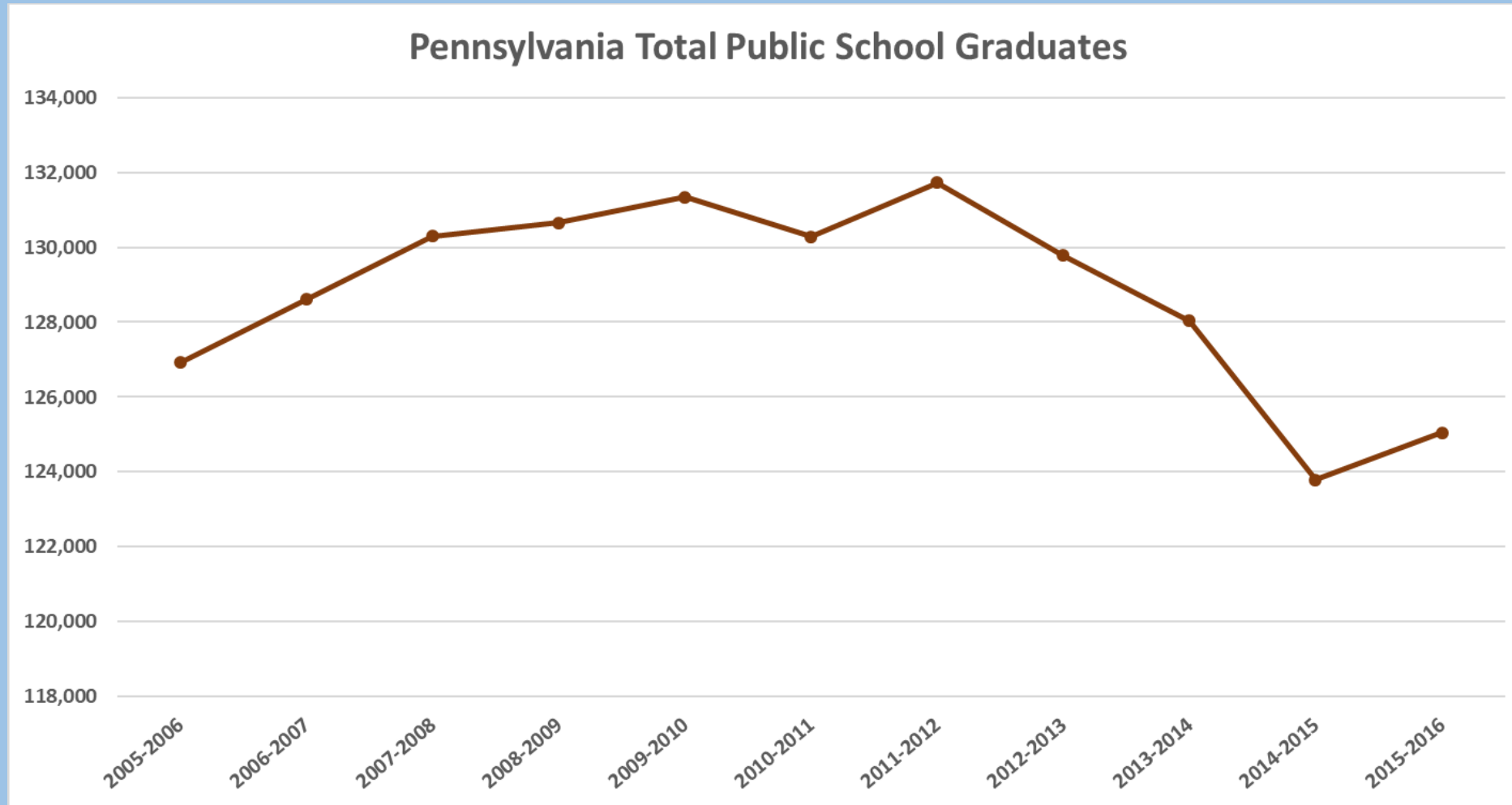
# Race and Ethnicity



# Educational Attainment

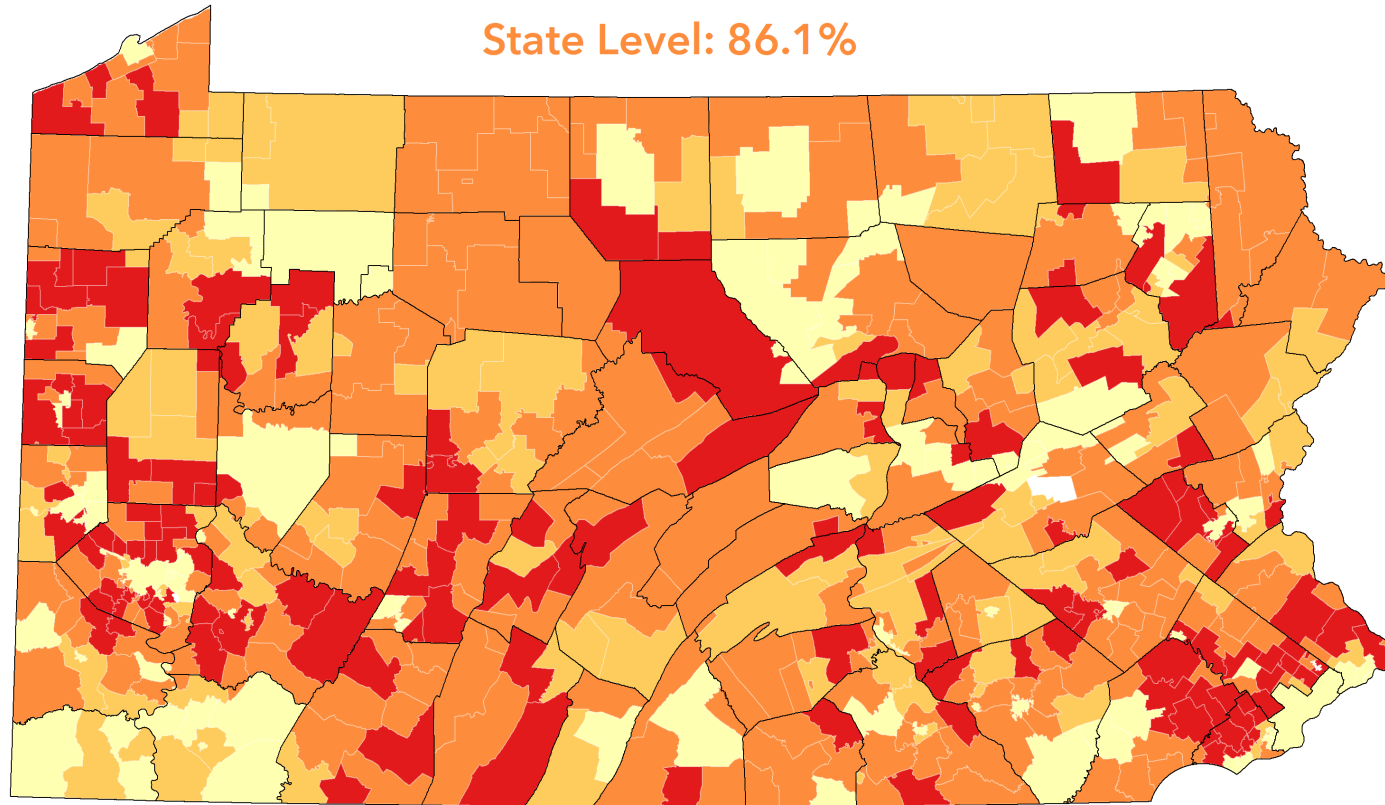


# Graduates



## 4-Year Cohort Graduation Rates by School District

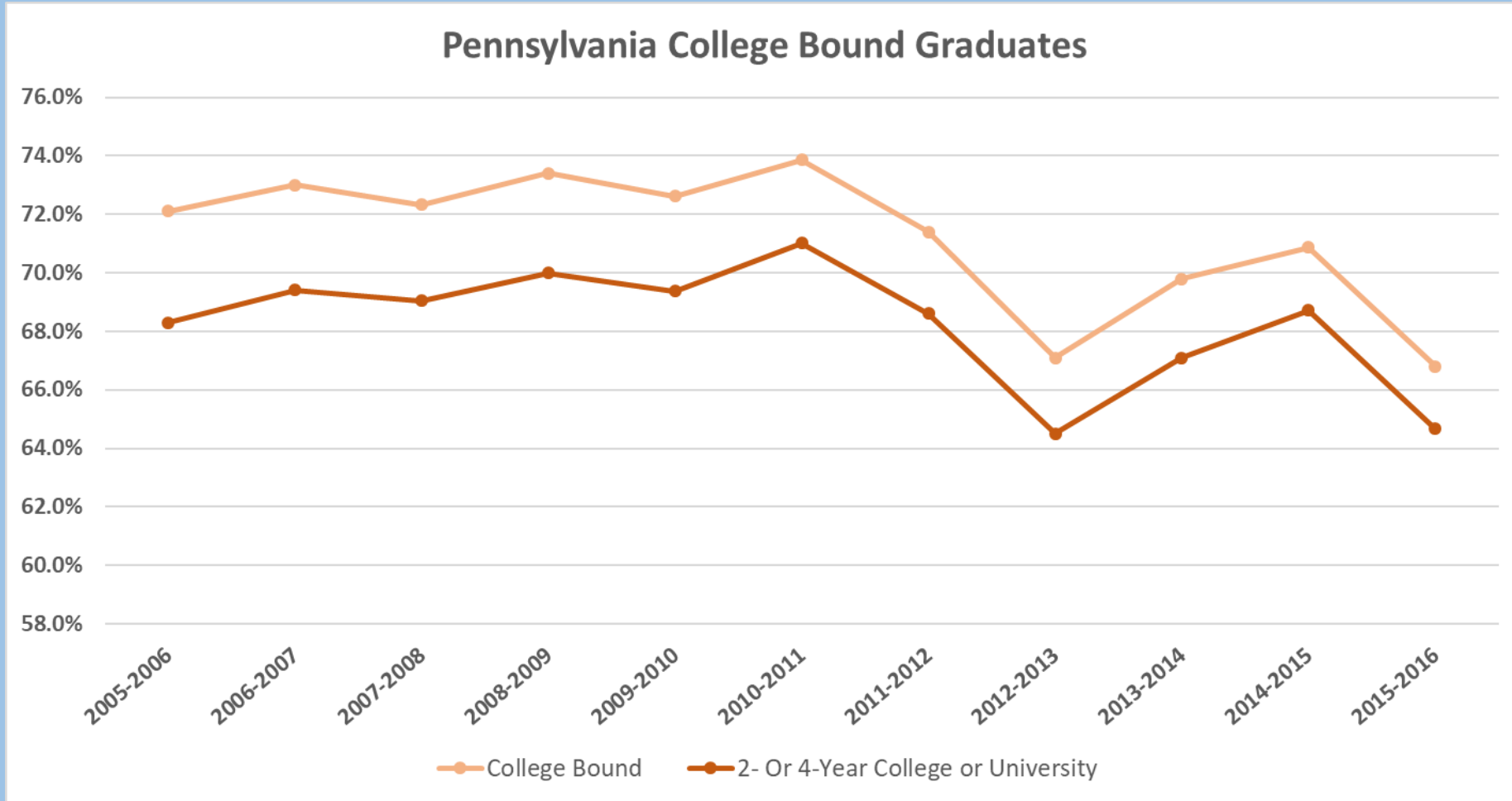
State Level: 86.1%



Less than 86.1%   90.0% to 95.0%   No Data  
86.1% to 89.9%   Greater than 95.0%

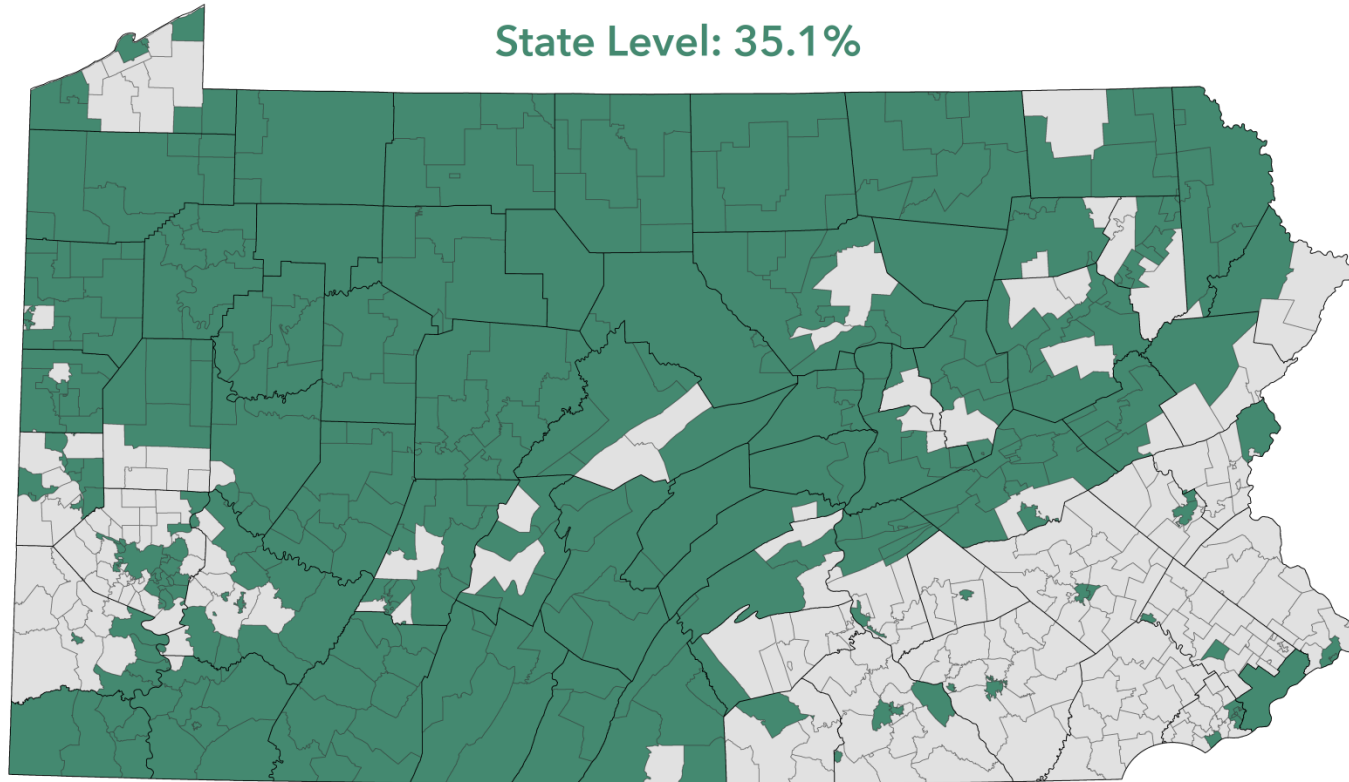


# College Bound Graduates



## *Ratio of School District to State for Families with Incomes Less than 50k*

State Level: 35.1%



□ Below State Level    ■ At or Above State Level



PennState

Hendrick Best Practices for  
Adult Learners Conference

May 9, 2017

# Tour of the PaSDC Dashboards



PennState

Hendrick Best Practices for  
Adult Learners Conference

May 9, 2017



# Questions



Sue Copella  
Director  
Pennsylvania State Data Center  
[pasdc@psu.edu](mailto:pasdc@psu.edu)  
717-948-6427



PennState

Hendrick Best Practices for  
Adult Learners Conference

May 9, 2017