

# A deeper Understanding: Academic Accommodations for Adult Learners in Traditional and Online Settings

Kimberly Barger M.Ed., CRC, Campus Liaison, Disability Specialist, University Park

Terry Watson, MS., Assistant Director, Student Disability Services Penn State World Campus

Special Guest: Elinor McNeel, Penn State World Campus Undergraduate Student



**PennState**

**Hendrick Best Practices for  
Adult Learners Conference**

May 8, 2019

# Today's Thoughts:

- Accommodations, a new world vs. a different world.
- Institutional barriers
- Self barriers
- Technology
- Glimpse in the life of the adult learner



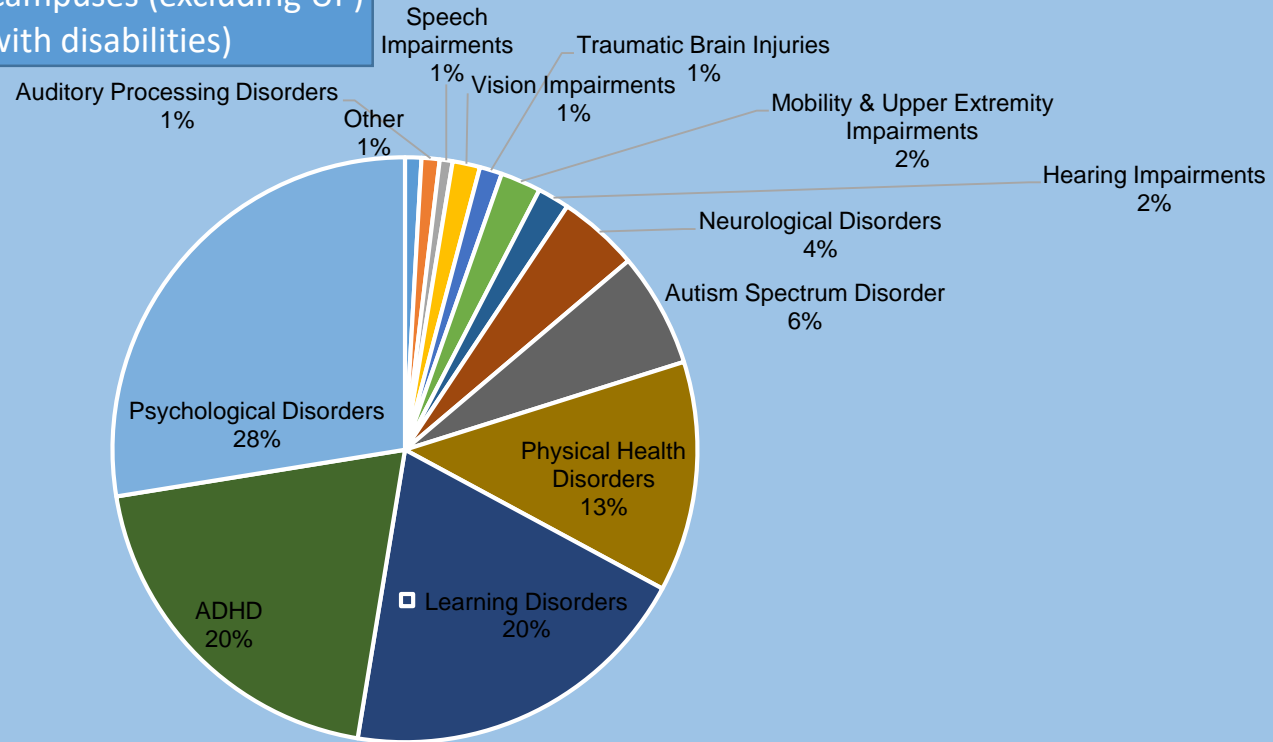
# Functional Impairments to Life Activities (Including but not limited to)

Caring for self	Performing manual tasks	Seeing	Hearing
Eating	Sleeping	Walking	Standing
Lifting	Bending	Speaking	Breathing
Learning	Reading	Concentrating	Thinking
Communicating	Working	Function of immune system	Function of digestion, bowel and bladder system
Normal cell growth	Brain functions	Circulatory functions	Endocrine functions
Respiratory system functions			

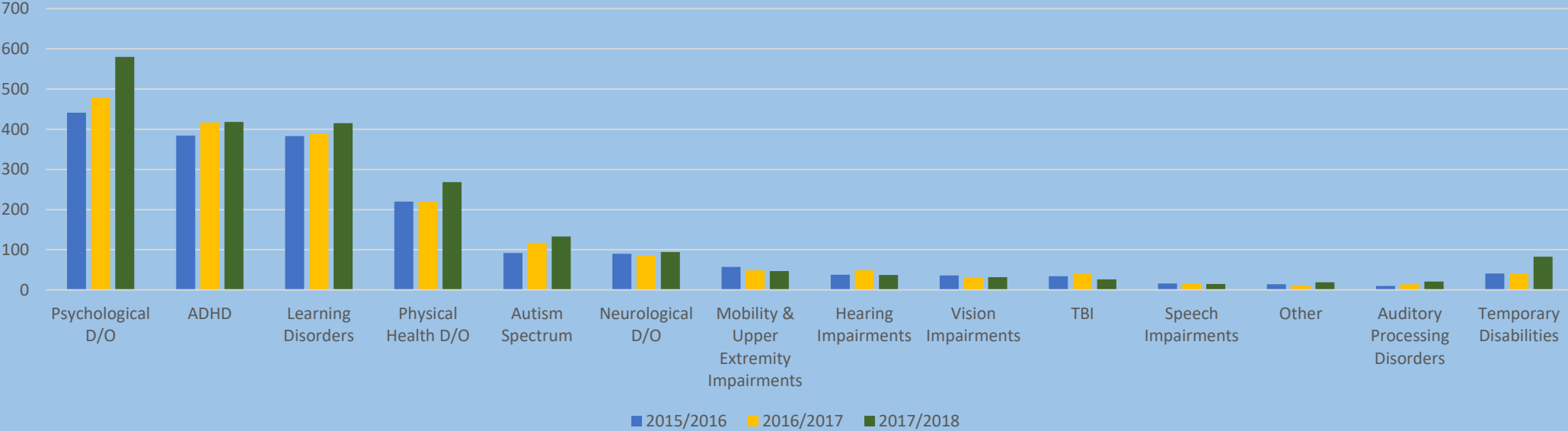


# 2017-2018 Registered students

Prevalence of Disability Types across PSU Campuses (excluding UP)  
(out of 1629 registered students with disabilities)



Prevalence of Disability Types Across PSU Campus Locations



# A glimpse in the past...



# Accommodations: A different World

- Truly providing multiple means to engage the student
- What works well here, may not work well there

# The Process

- Students need to complete an intake, requesting the accommodations.
- The student needs to provide appropriate documentation of disability.
- Parents **may not** request accommodations and/or services on behalf of their son and/or daughter. The student must request services and accommodations.
- The length of time from when a student requests accommodations until he/she is able to receive the accommodations can vary.





# Institutional barriers

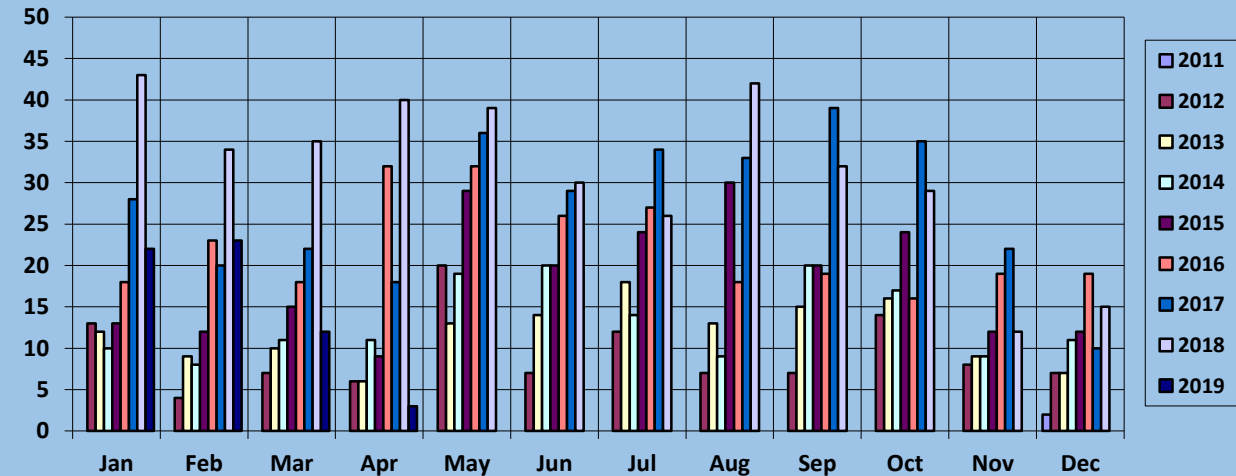
- Adaptability and flexibility
- Evaluating institutional failures
- Spaces and physical barriers
- ESA and Service Animals



# Category of Disclosure

- Inconclusive: “I have nothing”
- Proactive: “History works well”
- Semi-Proactive: “History of conflict”
- Reactive: “Oh no!”

Number of Incoming SDS students (By Month)



# Self Barriers

- New diagnosis
- Hidden Disability
- Stigma
- Intersectionality of culture and beliefs



# Technology related barriers

## Student competencies with technology



# A Glimpse in the Life of an Adult Learner



# Questions and Discussion...



**PennState**

**Hendrick Best Practices for  
Adult Learners Conference**

May 8, 2019